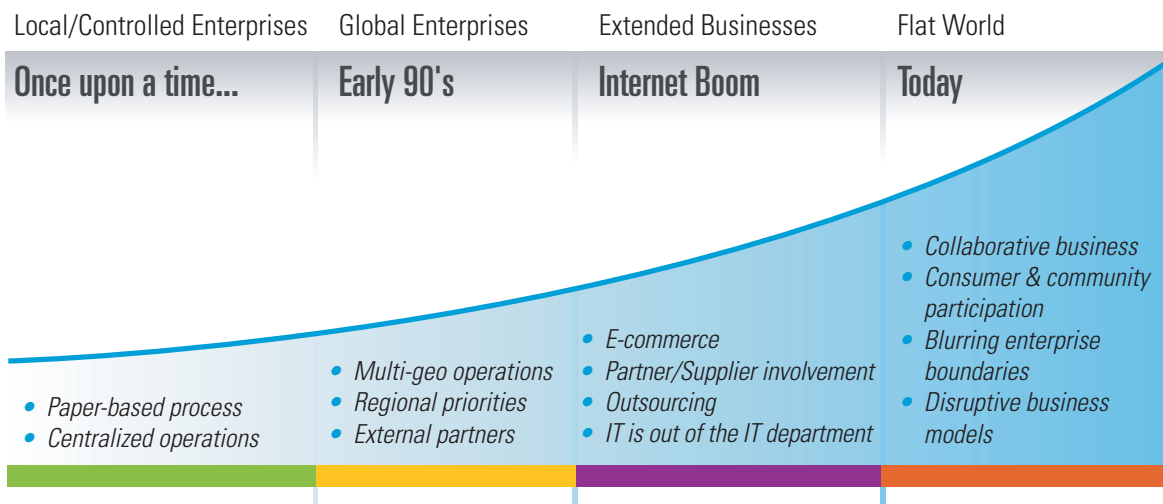


## Enterprise Information Management

The explosive growth in volume of information with over 85% of the information in unstructured format, the complexity arising from disparate information sources, and the nature of information present severe challenges in managing information effectively. Enterprise Information Management (EIM), an integrative discipline, solves information management issues, by structuring, describing and governing information assets, regardless of organizational and technological boundaries.

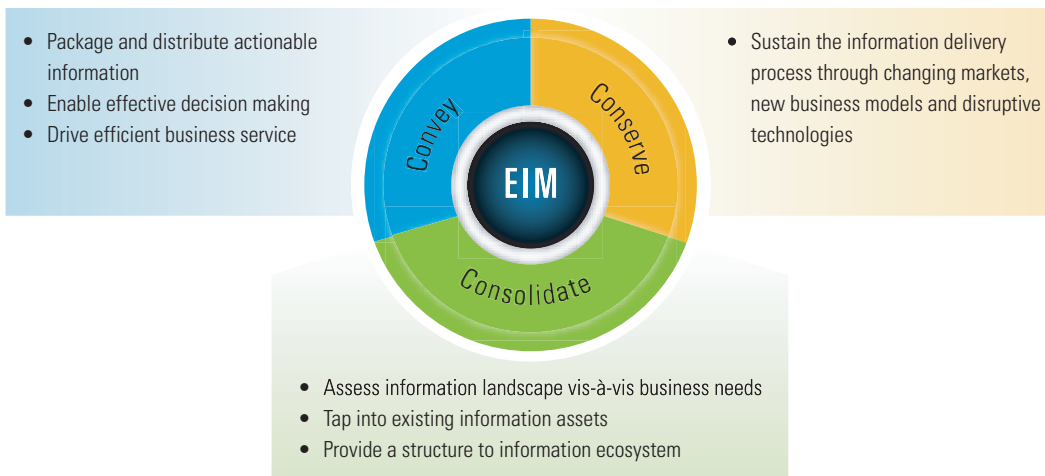
### Evolution of Enterprises



Disruptive technology trends have resulted in uncontrolled flow of information, compliance constraints and regulatory pressures and forced enterprises to work in a collaborative environment. Enterprises have evolved significantly in terms of sources of information and usage of information. To derive insights from information, enterprises need a comprehensive approach addressing presentation, access, maintenance, analysis, and integration of information across sources.

Infosys' EIM services ensure return on information by developing an innovative factory model, with ready to use frameworks, methodologies, accelerators and tools, which helps build solutions that can be rapidly deployed.

### Infosys Approach to EIM



## Service Offerings

Infosys offers end to end services covering Consulting, Implementation and Migration. These services address all aspects of the entire EIM spectrum: Content Management, Information Portals, Business Intelligence (BI), Identity and Access Management (IAM), Enterprise Search.

The offerings cater to the integration, delivery and storage of information in a form that could be consumed by various stakeholders through the most efficient channels. It may be broadly categorized under the following areas -

### CONSOLIDATE

- Information Architecture and Strategy
- Integration and Data Quality
- SOA Enablement
- Transformation and Migration

### CONVEY

- Advanced Analytics
- Enterprise Intelligence
- Information Access
- Information Delivery
- Real Time BI

### CONSERVE

- Compliance and Risk/Security
- EIM Governance
- EIM Program Management
- Information Life Cycle Management (Data Warehouse and ECM)

## Client Success

*The client, a leading financial services provider, wanted to implement a comprehensive web-based information delivery capability to facilitate information access for its internal and external users. Challenges in the proposed implementation were working with different vendors for varied applications, recommending an integration approach for different applications and providing comprehensive reporting across applications. Partnering with the client, Infosys defined a high-level integration approach and evaluated the existing tools. Infosys designed and architected a portal for consolidation of various application portals and applications. The portal implementation was aligned with enterprise level initiatives for content management, security and user experience. The engagement resulted in enhanced levels of usability and functionality, centralization of accounting activities, availability of a comprehensive reporting tool for ad-hoc and standard reports.*

## Allied Services

### Business Consulting

Provides you with strategic differentiation and operational superiority, assessments, proprietary industry analyses & projects structured around beating the competition.

### SOA Services

Our SOA Services will help you achieve better Business-IT alignment with clearly defined accountability. They help you build on existing IT investments to achieve process standardization & improve process efficiency.

### Performance Engineering & Enhancement (PE2)

Based on a holistic approach to performance improvement, our PE2 solution amplifies application performance, availability and scalability to enable organizations to derive maximum value from their IT systems.

### Development Application

Helps you develop turnkey solutions with a faster time to market and a lower Total Cost of Ownership. The service ranges from building a business case to assessing portfolio to designing solutions to building and implementing the solution.



Building  
**Tomorrow's** Enterprise

For more information, contact [askus@infosys.com](mailto:askus@infosys.com)

### About Infosys

Many of the world's most successful organizations rely on Infosys to deliver measurable business value. Infosys provides business consulting, technology, engineering and outsourcing services to help clients in over 30 countries build tomorrow's enterprise.

For more information about Infosys (NASDAQ:INFY), visit [www.infosys.com](http://www.infosys.com).