



# IMPROVING PATIENT RECRUITMENT FOR CLINICAL TRIALS: AN ANALYTICAL APPROACH

## Abstract

Patient recruitment is an essential aspect of clinical trials, but it can also be one of the most challenging. This paper explores the challenges of patient recruitment for clinical trials and discusses several analytical solutions that can be used to overcome these challenges. These solutions include educating patients and providers, making it easier to find clinical trials, providing financial assistance, and addressing patient concerns. By using these solutions, clinical trials can improve patient recruitment and make it easier for patients to access the latest treatments.





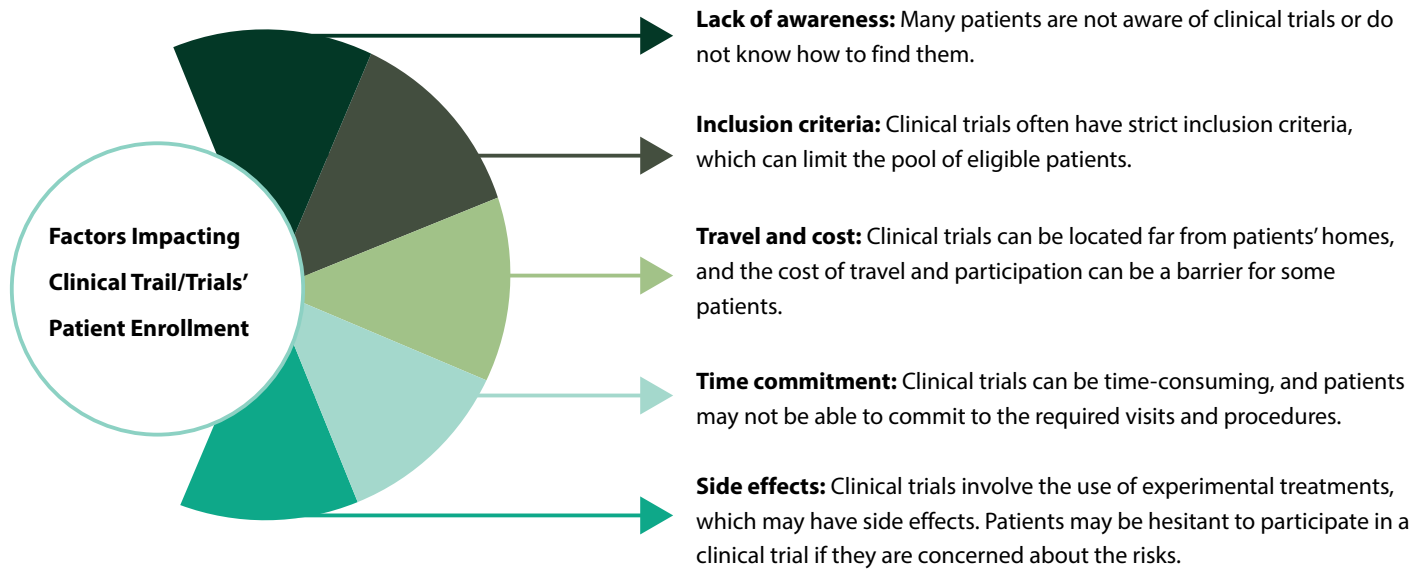
## Table of Contents

Introduction _____	3
Lack of awareness _____	3
Inclusion criteria _____	4
Travel and cost _____	5
Time commitment _____	6
Side effects _____	8
Conclusion _____	9

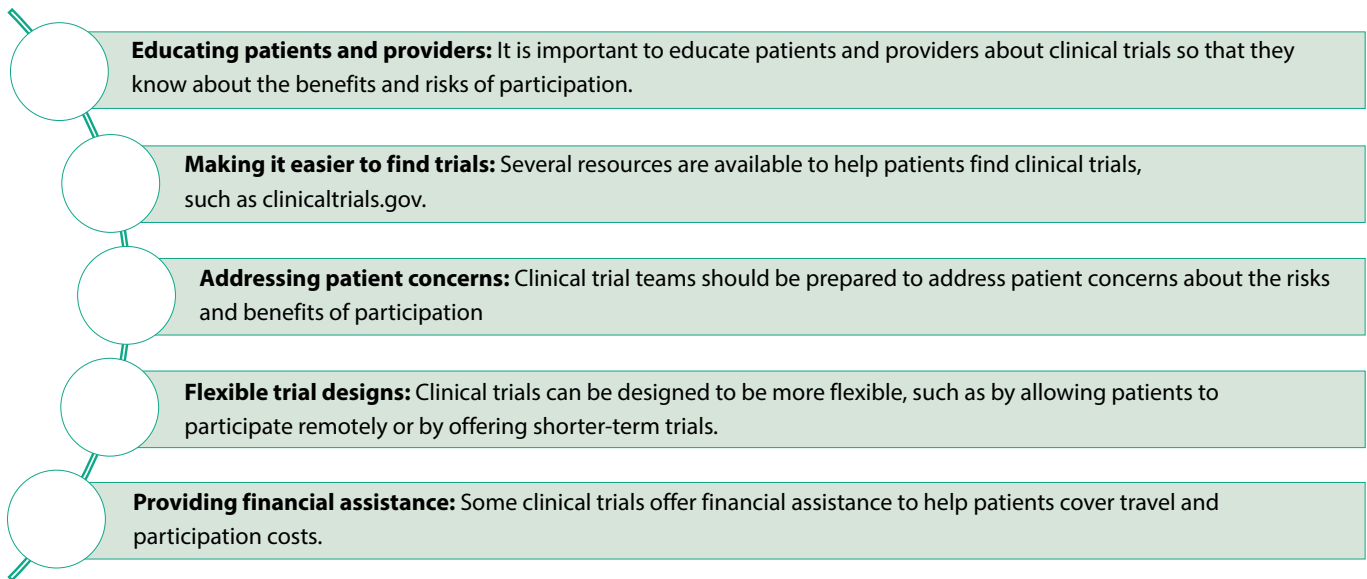


## Introduction

Patient recruitment is one of the most important aspects of clinical trials, but it can also be one of the most challenging. Numerous factors may impede patient recruitment for clinical trials.

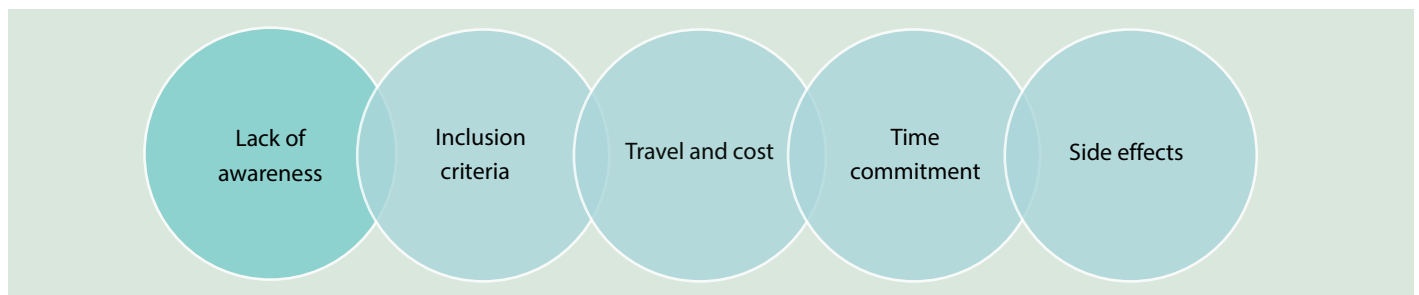


There are several things that can be done to overcome these challenges and improve patient recruitment for clinical trials. These include:



By taking these steps, we can improve patient recruitment for clinical trials and make it easier for patients to access the latest treatments.

Here are some additional tips for overcoming patient recruitment challenges in each area:





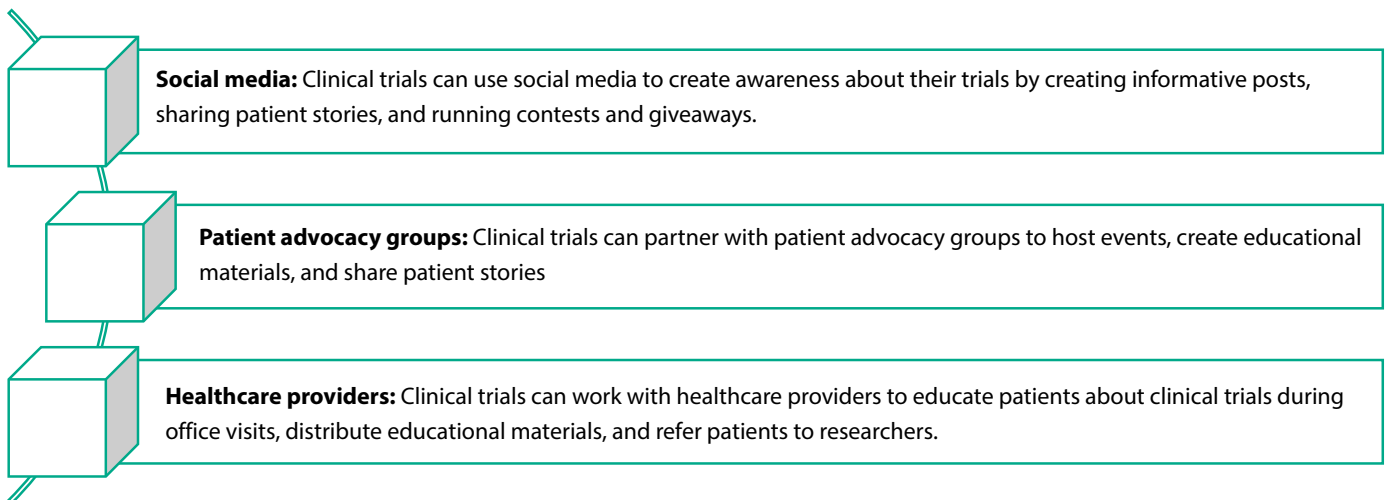
## Lack of awareness

Use a variety of channels to reach patients, including social media, patient advocacy groups, and healthcare providers. There are several analytical solutions that can be used to help with the lack of awareness of clinical trials. These include:

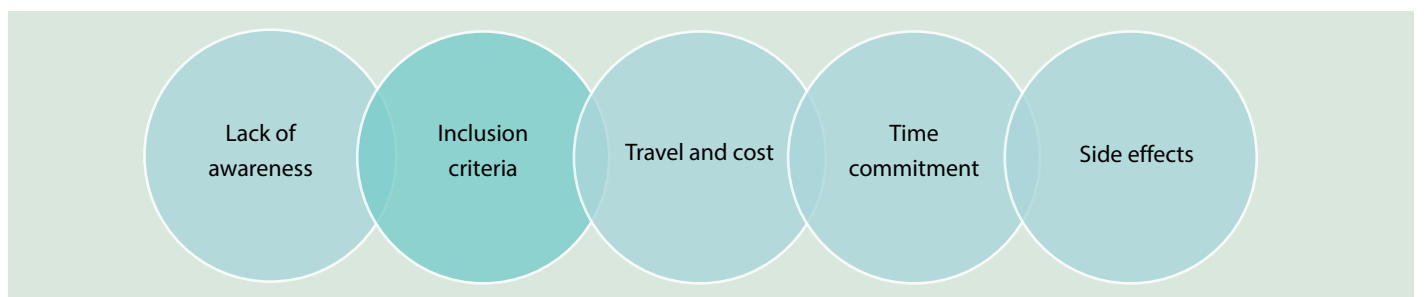


<b>Social media</b>	Social media is a powerful tool for reaching a large audience. Clinical trials can use social media to create awareness about their trials, recruit patients, and answer questions.
<b>Patient advocacy groups</b>	Patient advocacy groups are a great way to reach patients who are already interested in clinical trials. These groups can help to spread the word about clinical trials and connect patients with researchers.
<b>Healthcare providers</b>	Healthcare providers are in a unique position to reach patients who may be eligible for clinical trials. They can educate patients about clinical trials and refer them to researchers.

By using a variety of channels to reach patients, clinical trials can increase awareness about their trials and recruit more patients. Here are some specific examples of how these channels can be used:



By using these channels, clinical trials can increase awareness about their trials and recruit more patients.



## Inclusion criteria

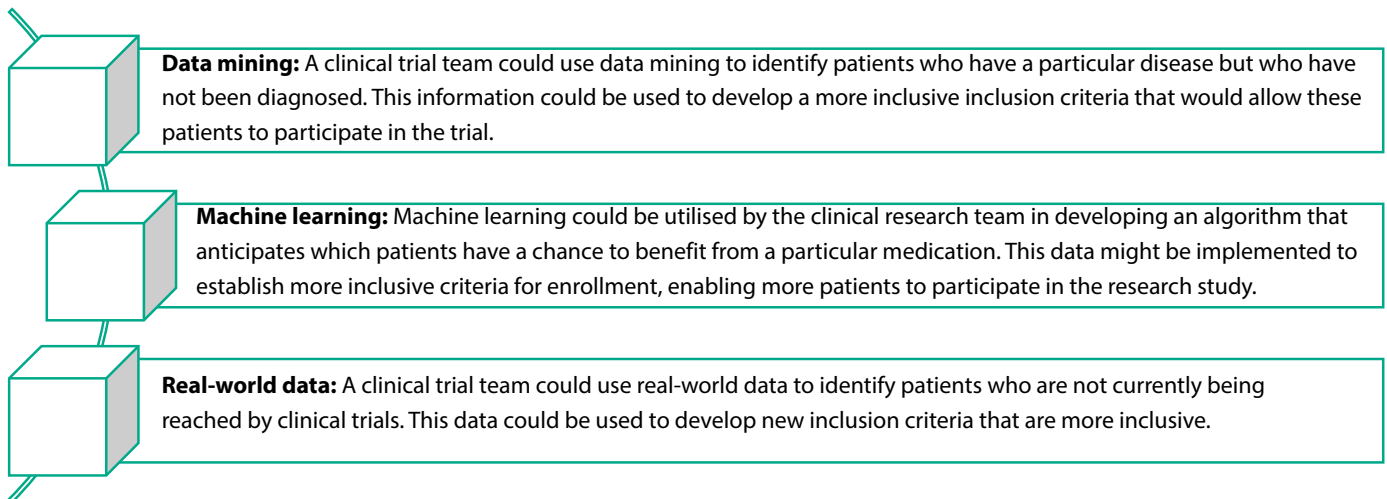
Make sure that your inclusion criteria are as broad as possible to maximize the pool of eligible patients. There are a number of analytical solutions that can be used to help with inclusion criteria. These include:



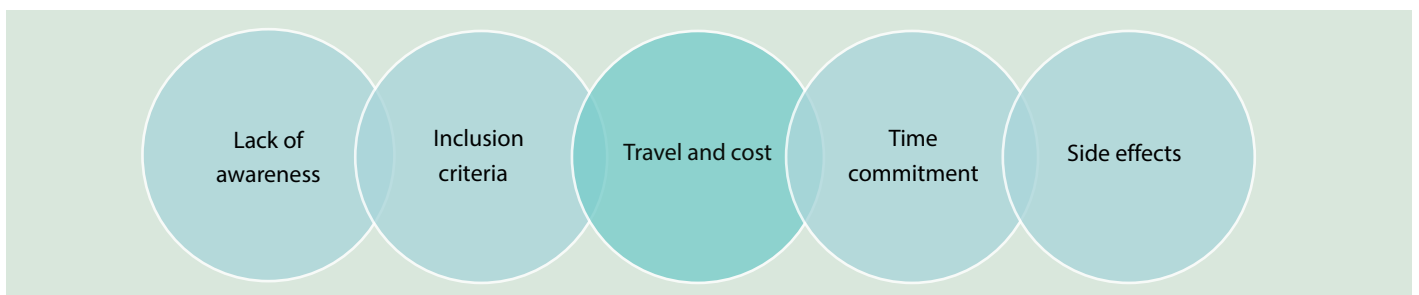
<b>Data mining</b>	Data mining can be used to identify patients who are likely to be eligible for clinical trials. This can be done by analyzing patient data, such as medical records, demographics, and lifestyle factors.
<b>Machine learning</b>	Machine learning can be used to develop algorithm to predict which patients will likely benefit from a particular treatment. This information can be used to create a more inclusive inclusion criteria.
<b>Real-world data</b>	Real-world data can be used to identify patients who are not currently being reached by clinical trials. This data can be used to develop new inclusion criteria that are more inclusive.

By using these analytical solutions, clinical trials can make their inclusion criteria more inclusive and recruit more patients.

Here are some specific examples of how these solutions can be used:



By using these solutions, clinical trials can make their inclusion criteria more inclusive and recruit more patients.



## Travel and cost

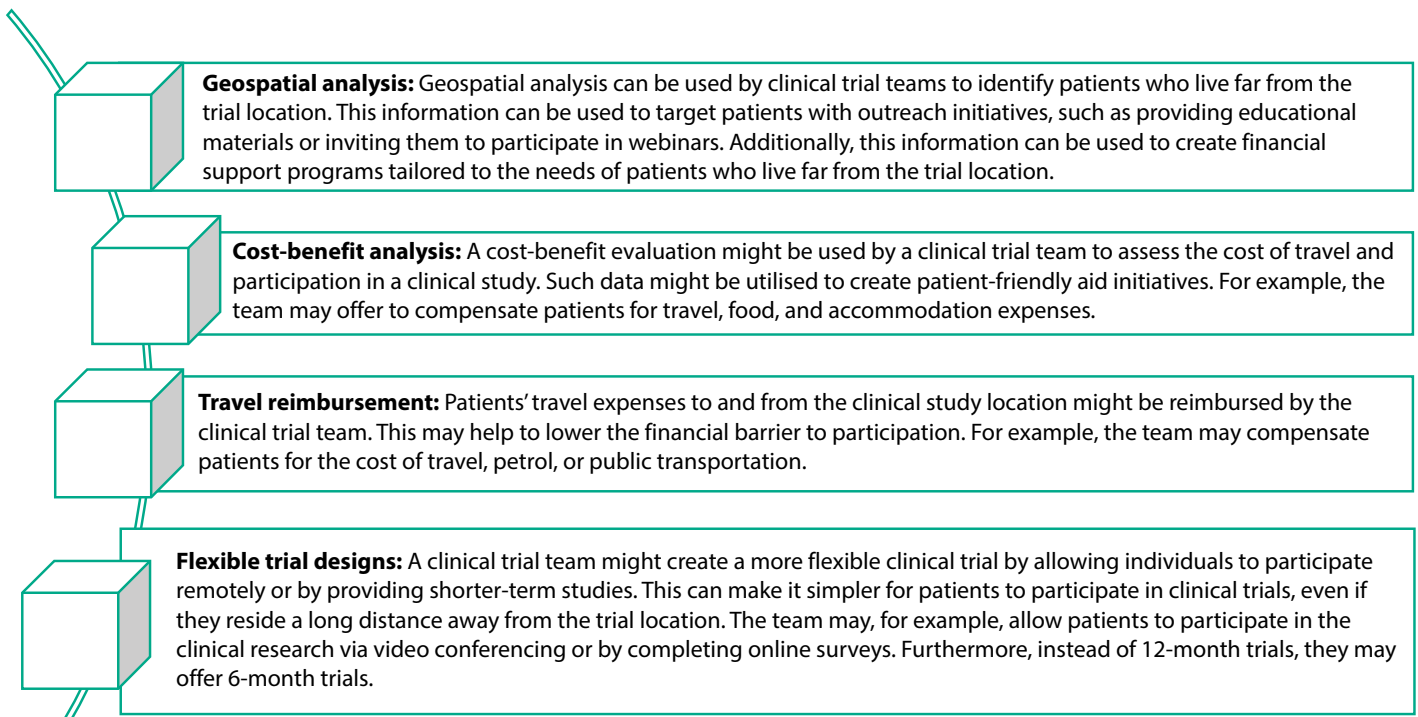
Offer financial assistance to help patients cover the costs of travel and participation. There are several analytical solutions that can be used to help with travel and cost. These include:



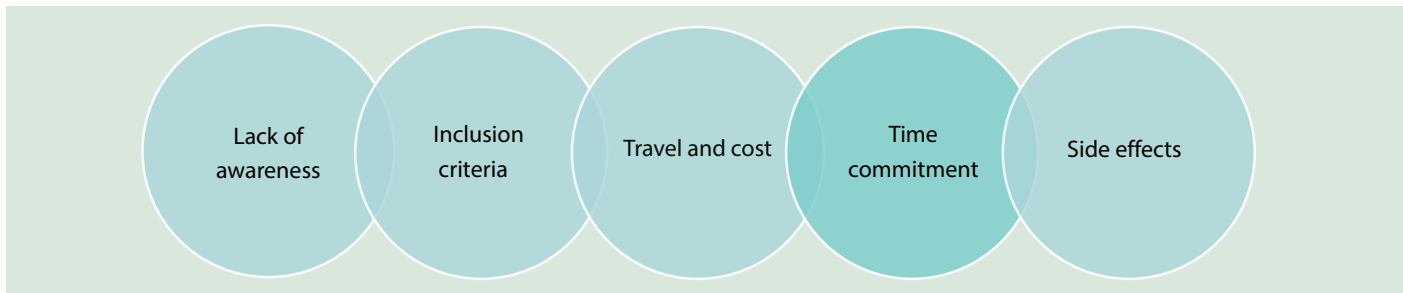
<b>Geospatial analysis</b>	Geospatial analysis can be used to identify patients who are located far from clinical trial sites. This information can be used to target patients with outreach efforts and to provide financial assistance for travel.
<b>Cost-benefit analysis</b>	Cost-benefit analysis can be used to determine the cost of travel and participation in a clinical trial. This information can be used to develop financial assistance programs that are affordable for patients.
<b>Travel reimbursement</b>	Clinical trials can reimburse patients for the cost of travel to and from the clinical trial site. This can help to reduce the financial barrier to participation.
<b>Flexible trial designs</b>	Clinical trials can be designed to be more flexible, such as by allowing patients to participate remotely or by offering shorter-term trials. This can make it easier for patients to participate in a clinical trial, even if they live far from the clinical trial site.

By using these analytical solutions, clinical trials can reduce the cost of travel and participation and make it easier for patients to participate in clinical trials.

Here are some specific examples of how these solutions can be used:



By using these solutions, clinical trials can reduce the cost of travel and participation and make it easier for patients to participate in clinical trials.



## Time commitment

Make sure that your clinical trial is designed to be as time efficient as possible. There are several analytical solutions that can be used to help with time commitment. These include:

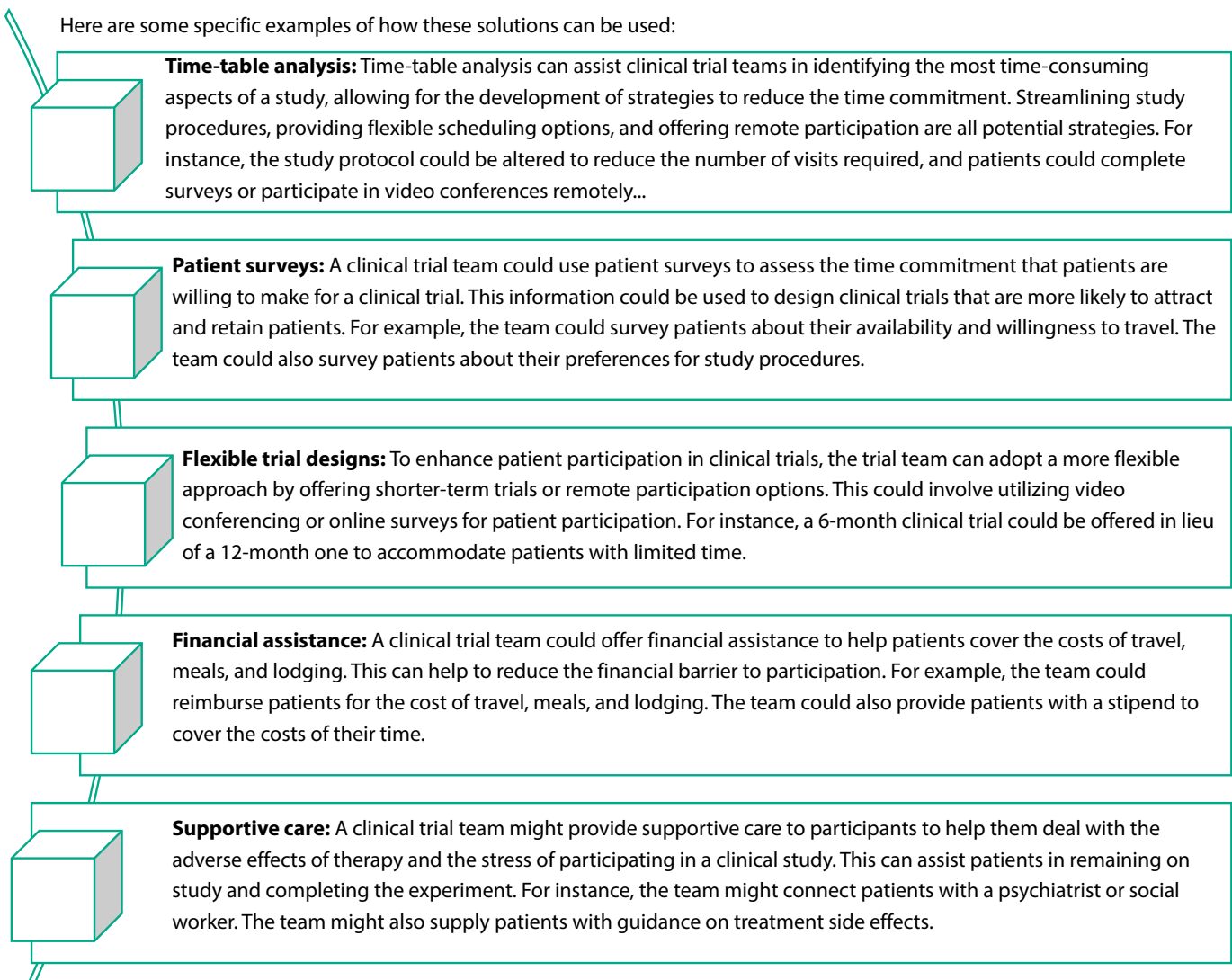




<b>Time-table analysis</b>	Time-table analysis can be used to identify the most time-consuming aspects of a clinical trial. This information can be used to develop strategies for reducing the time commitment, such as by streamlining the study procedures or by offering flexible scheduling options.
<b>Patient surveys</b>	Patient surveys can be used to assess the time commitment that patients are willing to make for a clinical trial. This information can be used to design clinical trials that are more likely to attract and retain patients.
<b>Flexible trial designs</b>	Clinical trials can be designed to be more flexible, such as by allowing patients to participate remotely or by offering shorter-term trials. This can make it easier for patients to participate in a clinical trial, even if they have limited time.
<b>Financial assistance</b>	Clinical trials can offer financial assistance to help patients cover the costs of travel, meals, and lodging. This can help to reduce the financial barrier to participation.
<b>Supportive care</b>	Clinical trials can offer supportive care to help patients manage the side effects of treatment and the stress of participating in a clinical trial. This can help patients to stay on the study and complete the trial.

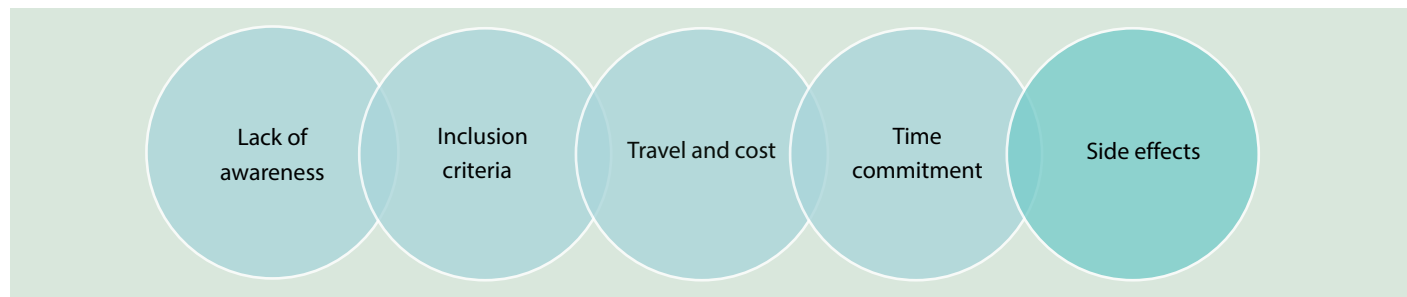
By using these analytical solutions, clinical trials can reduce the time commitment and make it easier for patients to participate in clinical trials.

Here are some specific examples of how these solutions can be used:





By using these solutions, clinical trials can reduce the time commitment and make it easier for patients to participate in clinical trials.



## Side effects

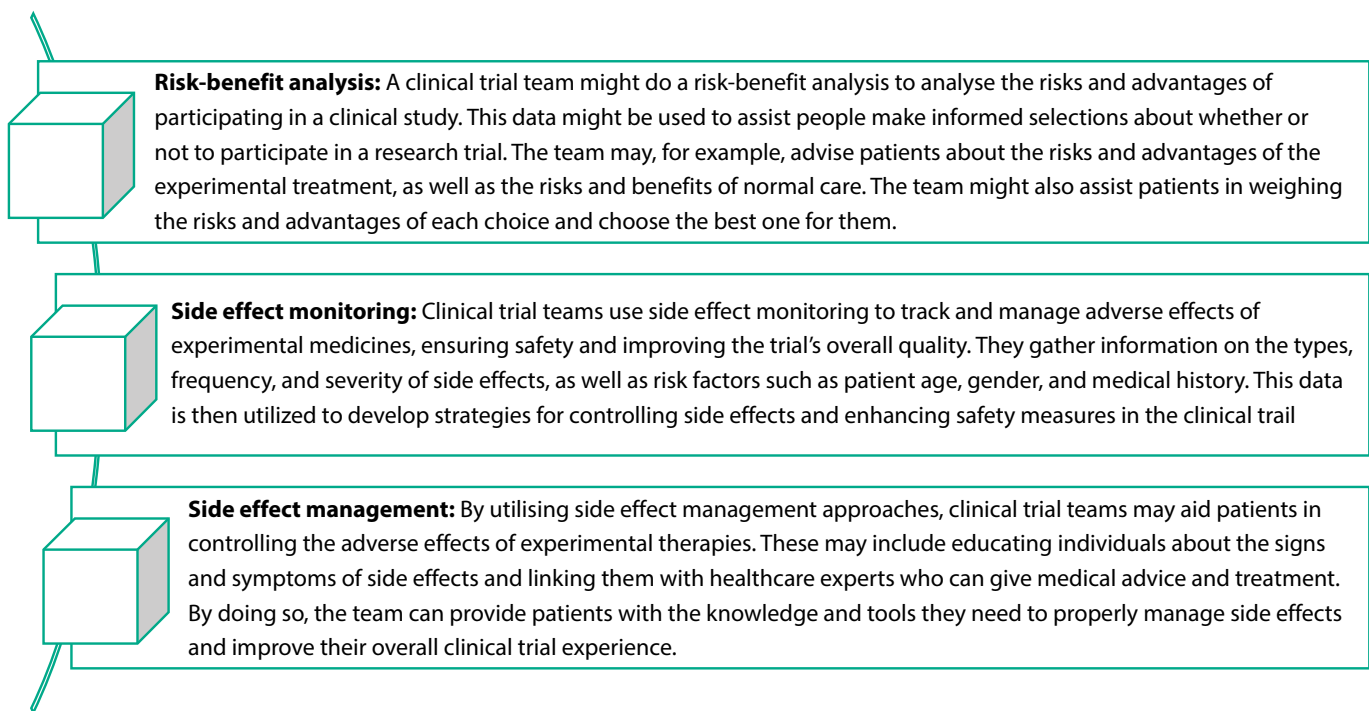
Be transparent with patients about the risks and benefits of participating in your clinical trial. There are several analytical solutions that can be used to help with side effects. These include:



<b>Risk-benefit analysis</b>	Risk-benefit analysis can be used to compare the risks and benefits of participating in a clinical trial. This information can be used to help patients make informed decisions about whether or not to participate in a clinical trial.
<b>Side effect monitoring</b>	Side effect monitoring can be used to track the side effects of experimental treatments. This information can be used to identify and manage side effects and to improve the safety of clinical trials.
<b>Side effect management</b>	Side effect management can be used to help patients manage the side effects of experimental treatments. This can include providing patients with educational materials about side effects and connecting patients with healthcare providers who can help them manage side effects.

By using these analytical solutions, clinical trials can help to reduce the risks of side effects and make it easier for patients to participate in clinical trials.

Here are some specific examples of how these solutions can be used:



By using these solutions, clinical trials can help to reduce the risks of side effects and make it easier for patients to participate in clinical trials. And by following these tips, you can increase the chances of success in recruiting patients for your clinical trial.

## Conclusion

Patient recruitment is a crucial part of clinical trials, but it can be difficult due to a variety of challenges. To make it easier for patients to participate in clinical trials, it is important to use analytical solutions such as educating patients and providers, making it easier to find clinical trials, providing financial assistance, and addressing patient concerns. By taking these steps, clinical trials can improve patient recruitment and make it easier for patients to access the latest treatments.



## About the Authors



### Anshuman Dubey

Senior Consultant – Infosys Consulting – Life Science | Data Transformation

Anshuman Dubey is an experienced Senior Business Consultant with over 16 years of expertise in data products, DataMart, data governance, data modeling and security, data visualization, and data consulting. He has a successful track record of implementing critical projects in various commercial and operational areas of the life sciences and healthcare industries. He is well-versed in both agile methodologies and waterfall methods and can collaborate effectively with cross-functional teams.



### Viswanath (Vissi) Koppaka

Principal - Infosys Consulting - Life Sciences | Artificial Intelligence & Automation

Viswanath Koppaka has 21 years of analytics, life science, healthcare, business consulting, and leadership experience. An analytics leader leveraging a rare combination of strategic & complex program implementation with extensive Data Analytics, Business Intelligence & Digital Science knowledge. Provided end-to-end leadership to digital transformational and analytics initiatives – from strategy, requirements, definition, BI/analytics roadmap design, and solution design to implementation/governance and operations.

## About the Contributor



### Amit Thakkar

Associate Partner- Infosys Consulting - Life Sciences | Artificial Intelligence & Automation

Amit Thakkar is a business professional with more than 21 years of experience in analytics, business consulting, and data-driven decision support across 3 industries. He consulted with more than 25 Fortune companies across various business problems to design and implement analytical processes and methodologies. Helped multiple clients build analytics teams and infrastructure capabilities. Specific expertise in marketing, sales, merchandising, and supply chain analytics in pharmaceuticals, pharmacy, and retail verticals. Demonstrated a track record of building and running successful large global analytics teams.

## References: -

- <https://www.ncbi.nlm.nih.gov/pmc/articles/PMC4936073/>
- <https://www.patientcentra.com/patient-recruitment-insights/clinical-trials-awareness-problem>
- <https://healthcaresuccess.com/blog/healthcare-marketing/overcoming-clinical-trial-marketing-challenges-patient-recruitment-retention.html>
- <https://www.antidote.me/blog/10-clinical-trial-recruitment-strategies-that-work>
- <https://www.ncbi.nlm.nih.gov/pmc/articles/PMC2878987/>
- [https://www.ohsu.edu/sites/default/files/2019-12/Forte\\_Patient\\_Recruitment\\_ebook\\_2017.pdf](https://www.ohsu.edu/sites/default/files/2019-12/Forte_Patient_Recruitment_ebook_2017.pdf)
- <https://www.mosio.com/clinical-trial-cost-per-patient/>
- <https://www.ncbi.nlm.nih.gov/pmc/articles/PMC6263122/>
- <https://healthtalk.org/clinical-trials/time-commitment-money-and-other-practical-issues>
- <https://www.languageconnections.com/patient-recruitment-in-clinical-trials/>
- <https://trialsjournal.biomedcentral.com/articles/10.1186/s13063-022-06144-9>



For more information, contact [askus@infosys.com](mailto:askus@infosys.com)



© 2023 Infosys Limited, Bengaluru, India. All Rights Reserved. Infosys believes the information in this document is accurate as of its publication date; such information is subject to change without notice. Infosys acknowledges the proprietary rights of other companies to the trademarks, product names and such other intellectual property rights mentioned in this document. Except as expressly permitted, neither this documentation nor any part of it may be reproduced, stored in a retrieval system, or transmitted in any form or by any means, electronic, mechanical, printing, photocopying, recording or otherwise, without the prior permission of Infosys Limited and/ or any named intellectual property rights holders under this document.