

INFOSYS DIGITAL HEALTH PLATFORM

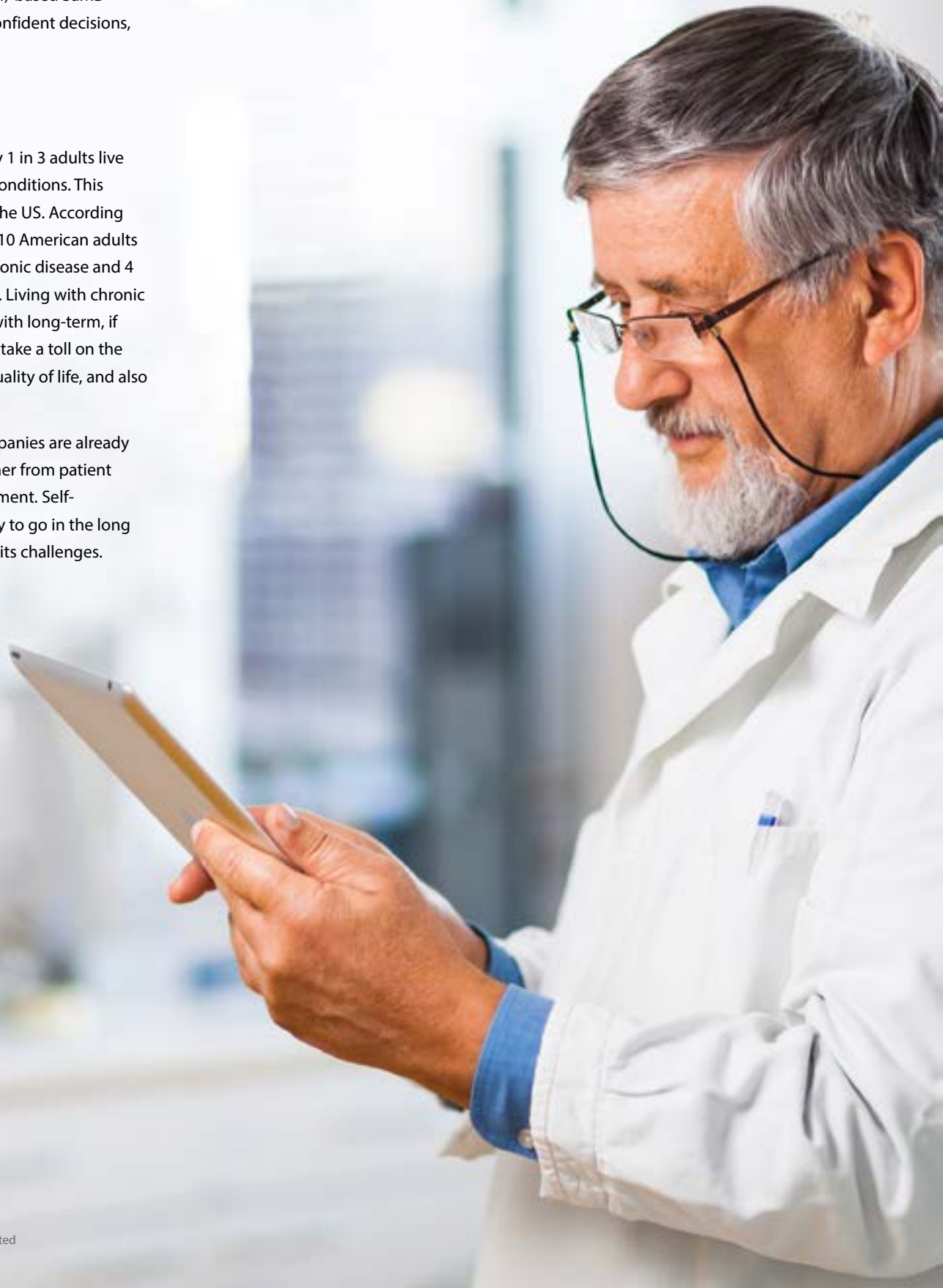


Infosys Digital Health Platform is the next-generation software platform that is designed to empower patients with data-driven insights. We are delivering the new patient experience by simplifying self-managing of chronic conditions. Our Artificial Intelligence (AI)-based SaMD platform helps make confident decisions, every day!

Overview

Globally, approximately 1 in 3 adults live with multiple chronic conditions. This number gets worse in the US. According to CDC's website*, 6 in 10 American adults are suffering from a chronic disease and 4 in 10 have two or more. Living with chronic illness is synonymous with long-term, if not life-long care. They take a toll on the patient, the patient's quality of life, and also the healthcare system.

Many life sciences companies are already taking a few steps further from patient education and engagement. Self-management is the way to go in the long term but it comes with its challenges.



Key challenges of Self-Management



Adherence to self-care regimen is largely dependent on patient behaviour



Even with motivation, patients struggle with daily decisions like nutrition and drug dosage



The patient might react after observing symptoms which could be too late to avoid an emergency hospital visit



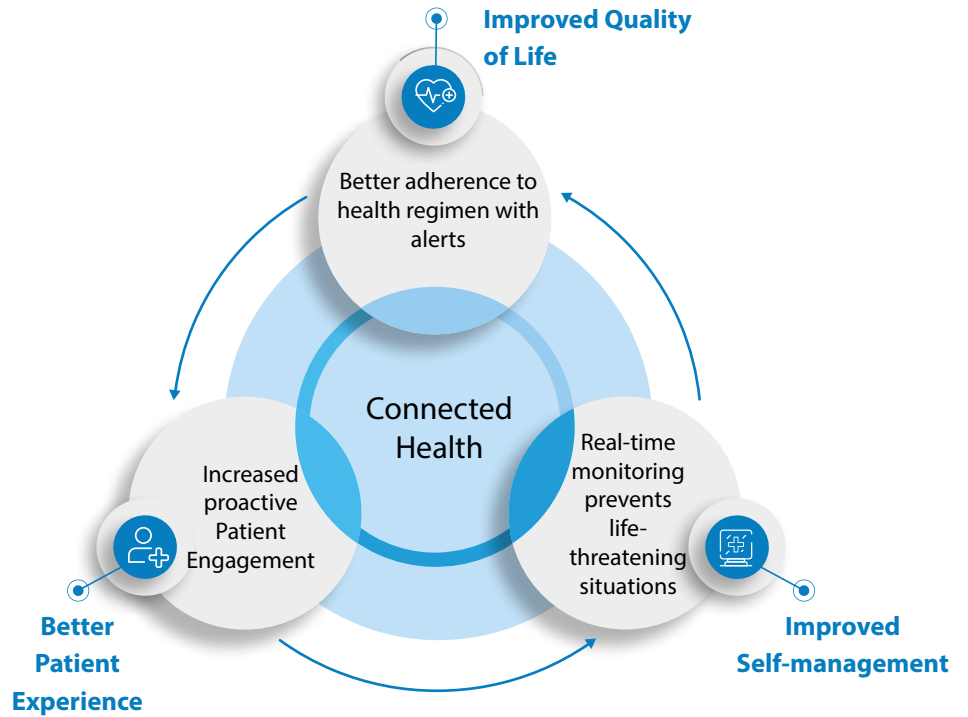
Traditional reactive interaction with doctors and care givers comes with long waiting time



During global crisis like a pandemic, availability of life sciences resources is unpredictable

Technological advancements in the life sciences industry are addressing these challenges via Connected Health. Many facets of life sciences

including self-managing chronic conditions are benefiting from this. Infosys Digital Health Platform is designed to power Connected Health.



Solution

Connected Health leverages the advancements in automation, analytics, AI, AR/VR, data science, and IoT to transform the patient experience. Infosys Digital Health Platform is built to accelerate connected health and thereby transform patient experience.

The platform is designed to support Class I, II, and III medical devices. Its data engine can ingest data and signals from a wide variety of devices and in prevalent formats. It further validates and processes data as per the digital service needs. The information is then transformed into contextual insights.

The cloud native, micro-services based, and multi-channel enabled platform comes with interventional functionality. It delivers actionable and predictive insights on-demand to end-user devices, mobile applications, and chatbots. Being mindful of the user preferences, push notifications and scheduled alerts act as reminders for the patient.

Digital Health Platform is SaMD regulatory compliant. The customized AI and Analytics based platform is ready to support FDA and EMA requirements. The modular platform can be seamlessly plugged into existing patient engagement solutions.

Benefits



Alerts patients to take relevant and timely actions



Mindful of user preferred configuration, push notifications and scheduled insights



Collects data and signals from any device and in any format



Can be plugged into existing patient engagement solutions

Key Differentiators



Modular, compliant, and personalized



Designed to support class I, II, and III medical devices



Interventional functionality to enable proactive adherence to regimen



Cloud native, micro-services based, and multi-channel enabled platform

* Content sourced from National Center for Chronic Disease Prevention and Health Promotion (NCCDPHP) on Centers for Disease Control and Prevention website(www.cdc.gov/chronicdisease/), April 28, 2021.

For more information, contact askus@infosys.com

Infosys[®]
Navigate your next

© 2021 Infosys Limited, Bengaluru, India. All Rights Reserved. Infosys believes the information in this document is accurate as of its publication date; such information is subject to change without notice. Infosys acknowledges the proprietary rights of other companies to the trademarks, product names and such other intellectual property rights mentioned in this document. Except as expressly permitted, neither this documentation nor any part of it may be reproduced, stored in a retrieval system, or transmitted in any form or by any means, electronic, mechanical, printing, photocopying, recording or otherwise, without the prior permission of Infosys Limited and/ or any named intellectual property rights holders under this document.