

STREAMLINING IT CARVE-OUTS (M&As)

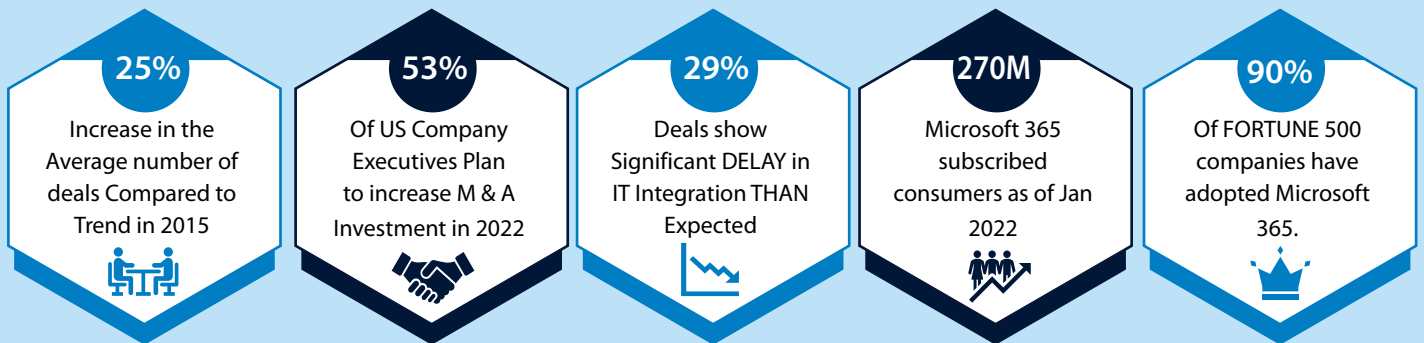
with Infosys Migration Factory
for Microsoft 365 Workloads

Infosys
cobalt



Infosys®
Navigate your next

Keeping up with the market changes demands relentless focus on innovation which also means redefining or reorganizing business portfolios. Enterprises are turning to **mergers, acquisitions**, even **divestitures** to stay aligned to the business objectives in this fast-evolving era of hybrid work and digital disruption. Coupled with this move towards growth, world over organizations are witnessing **accelerated adoption** of cloud based collaboration platforms to support hybrid work and provide best **employee experience** to retain talent in a new era of "Great Resignation".



Mergers & Acquisitions, Divestitures have been an integral to the dynamic business landscape, and driven by the increasing technology demands, digital and data driven assets, M&As are on the rise. In such a scenario, a seamless IT integration plays a crucial role in minimizing business disruption and enhancing employee efficiency, productivity, and experience.

These factors coupled with accelerated adoption of Cloud and M365, and sharper focus on human-centric workplace experiences, especially due to the disruption caused by the pandemic, has created a need for tenant migration and consolidation.

KEY M&A & DIVESTITURE CHALLENGES

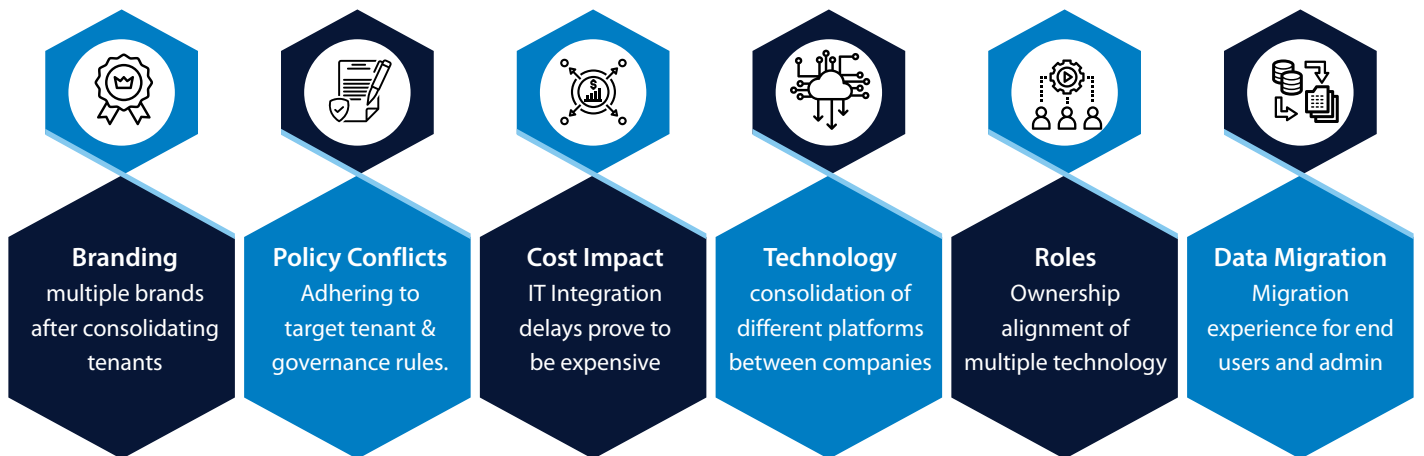
Mergers, acquisitions, and other such inorganic growth tools, while spurring growth & business competency introduce **complexity caused by disparate IT landscapes** which require harmonious integration. The increased adoption of cloud-based collaboration platforms

has led each M&A deal to result in the collaboration workload migration from one cloud platform to other cloud platform posing new technological and business challenges for organizations.

Collaboration experience, complexity of content, legal and compliance

ramifications, duplication of collaboration products for the same function, time constraints, are critical during M365 tenant migrations. Careful planning and effective communication are essential for successful and timely completion.

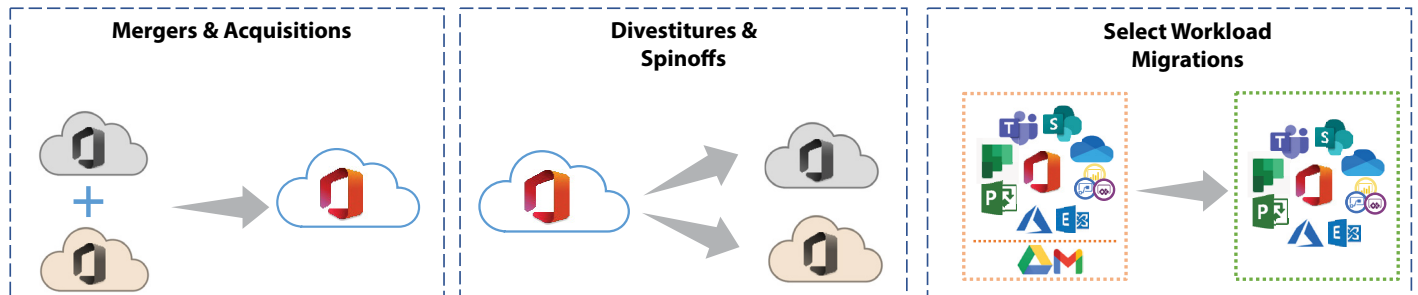
The key challenges in M&A programs are:



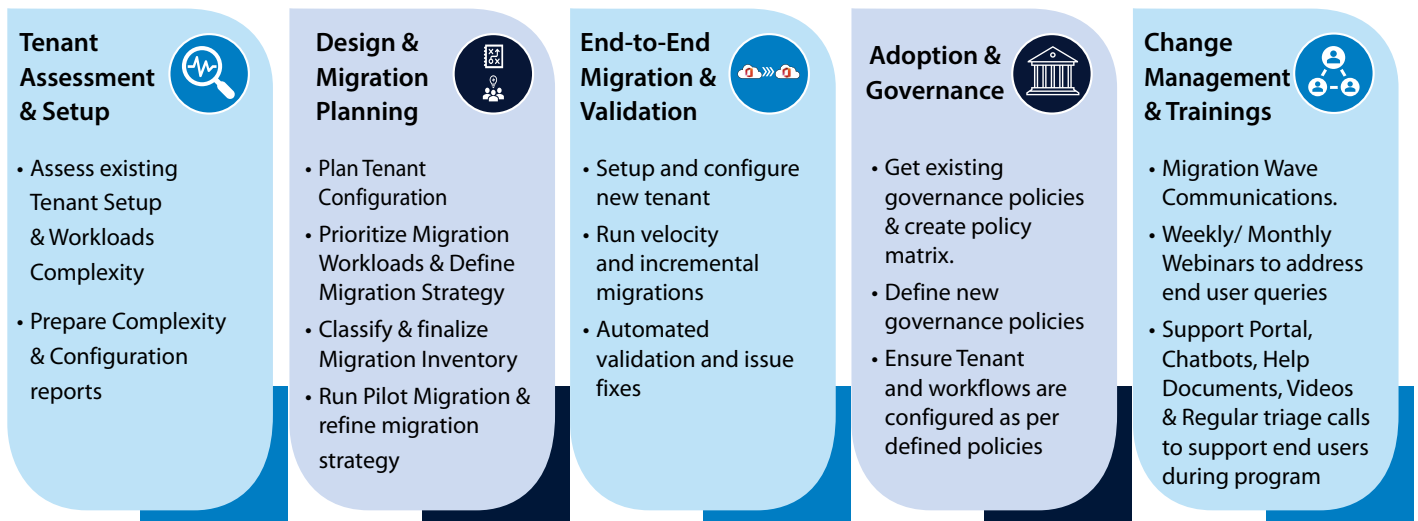
INFOSYS TENANT TO TENANT SERVICE OFFERINGS

M&A, JVs, alliances, and divestitures must be carried out in a way that creates business value for the organizations involved and has minimal impact on the flow of work and employee experience. A successful M&A activity requires a **best-in-class migration service** that offers seamless transformation and enhanced experience for employees.

With **human-centric experiences** as central pillar, and **extensive experience** Infosys brings tenant-to-tenant migration offerings that cover various M&A scenarios to help organizations quickly and efficiently integrate and transform collaboration platforms.



Infosys Digital Workplace Services' dedicated Center of Excellence & differentiators place us in a competitive position to support clients. Our comprehensive set of services for tenant-to-tenant migrations, powered by **Infosys Workplace Suite (IWS)** with its **Migration Factory** solution built on tenant-to-tenant best practices help smoothen and streamline M&A migration journey of consolidating or de-merging the M365 Tenants for our enterprise clients.




AGILE & ACCELERATED M&AS WITH INFOSYS MIGRATION FACTORY


Infosys with leadership in tenant-to-tenant migration, rich experience in large scale assessment, target platform design & migration planning, migration engagements, bolstered by strong partner relationships and inhouse solution, is the right ally to help enterprises in their M&A journeys. Our IWS Migration Factory focuses on lean and hyper automation to accelerate and cost-effectively migrate with the ability to customize for each organization's merger, divestiture, and specific workload migration requirements.


Our in-house migration tool automates migration jobs and seamlessly integrates with 3rd party tools to accelerate the tenant-to-tenant migration process. Automated migration activities with improved throughput offers 8-10 times better output than traditional solutions.





Migration Factory, an all-in-one solution offers high-speed performance, high security along with following capabilities from business perspective-


- 

Rapid Assessment
for insights into source environment complexity to scope the migration and proactively identify blind spots.
- 


Assessment Dashboard
for consolidated single shot view of source environment.
- 

Planning
Automated Wave Planning engine to calculate source's object complexity & size and suggest waves based on client/project requirements
- 

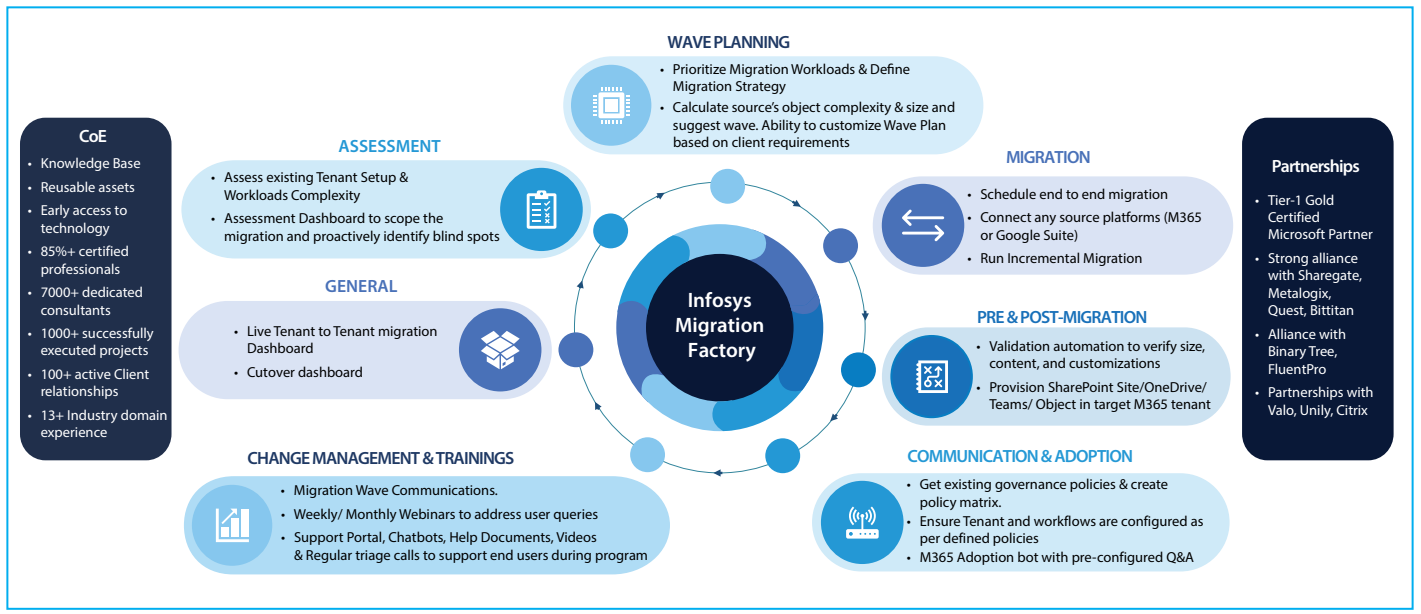
Live Migration Dashboard
An intuitive Migration Dashboard for deep insights about migration program status to key business stakeholders.
- 

Governance
to define new governance policies in target tenant and ensure all migrations are performed adhering to governance policies.
- 

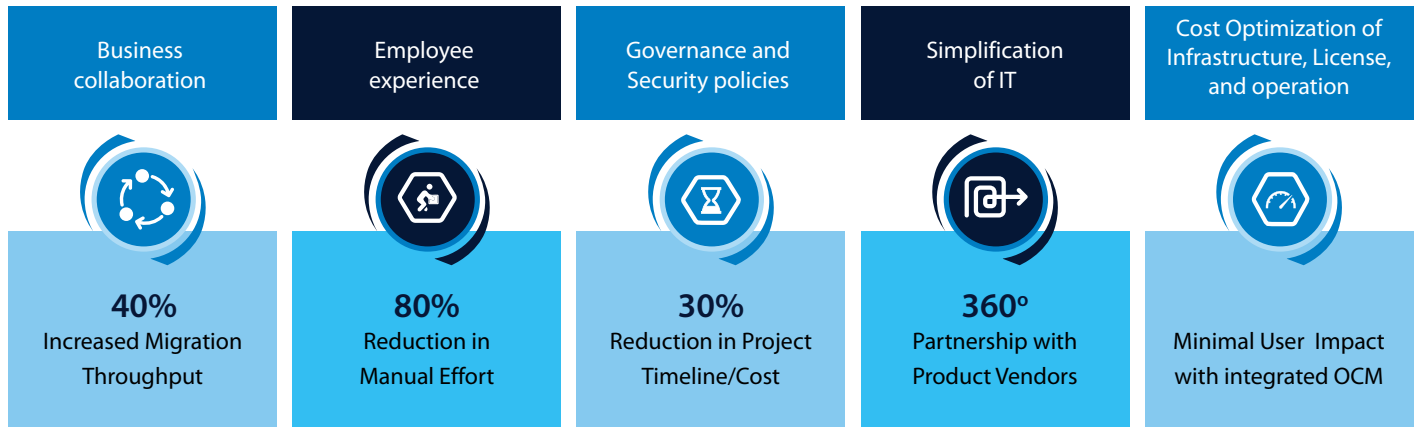
Migration that ensures:

 - Zero Downtime - During migration, users can collaborate with each other as if there were using a single platform
 - Easy Scalability – Quickly transfer data to target tenant at any scale by following parallel migration. Increased resource utilization helps to achieve hyper automation.
 - Multiple Workloads Support (Exchange, SharePoint, Teams, OneDrive) - Our solution has enabled in guaranteeing a seamless migration experience for multiple workloads besides ensuring an overall faster and cost-effective migrations
- 

Adoption – M365 Adoption bot helps users to get familiar with M365 services for users who are using non-MS cloud platform.



Our Migration Factory accelerates Microsoft 365 tenant consolidation and tenant divestiture through hyper automation improves the following:



TENANT TO TENANT MIGRATION SUCCESS STORIES

Microsoft 365 Migration for a Chemical's Manufacturer

12 TB SP Data Migrated	30 TB OneDrive
10K+ Site Collection	4200+ Sub-sites
370 Teams	40k Mailboxes

- Due to this organization's intended divestiture, the data had to undergo multiple mergers and spin-offs. Content across different M365 workloads across multiple M365 tenants were migrated.
- Developed a future ready Target environment design leveraging Migration Factory framework

Tenant Consolidation Program for Entertainment Products Company

1043 Teams / 2126 Channels	1532 Sites (4.7 TB) SharePoint sites
18 TB OneDrive	765 Azure Resources
5000+ Users	100+ Users Gmail & GDrive

- Program involved migration from 2 subsidiaries tenants to single target tenant to avoid duplicate M365 license costs and operation costs.
- Migration of desktop, mailboxes and other M365 workloads to Target tenant was performed without any major impact to end users.

M365 Transformation Program for European Electric utility company

35000+ Users	6000+ Teams
6 TB Data Migrated	Learning Pathway App

- Migration of user accounts and content across different M365 workloads across tenants with minimum disruption to day-to-day operations.
- Seamless collaboration between source and target tenants, OneDrive/Outlook rollout automation, Full automation in user provisioning process.

Source: Gartner



Infosys Cobalt is a set of services, solutions and platforms for enterprises to accelerate their cloud journey. It offers over 35,000 cloud assets, over 300 industry cloud solution blueprints and a thriving community of cloud business and technology practitioners to drive increased business value. With Infosys Cobalt, regulatory and security compliance, along with technical and financial governance comes baked into every solution delivered.

For more information, contact askus@infosys.com



© 2022 Infosys Limited, Bengaluru, India. All Rights Reserved. Infosys believes the information in this document is accurate as of its publication date; such information is subject to change without notice. Infosys acknowledges the proprietary rights of other companies to the trademarks, product names and such other intellectual property rights mentioned in this document. Except as expressly permitted, neither this documentation nor any part of it may be reproduced, stored in a retrieval system, or transmitted in any form or by any means, electronic, mechanical, printing, photocopying, recording or otherwise, without the prior permission of Infosys Limited and/ or any named intellectual property rights holders under this document.

[Infosys.com](https://www.infosys.com) | NYSE: INFY

Stay Connected   