

SAP Simple Finance on HANA








Challenge

Business distrust in today's reporting landscape is preventing business insights. There are complex closing processes driven by system limitations

and architecture that also lack flexibility for multidimensional reporting. Data redundancies are also driving the reconciliation effort.

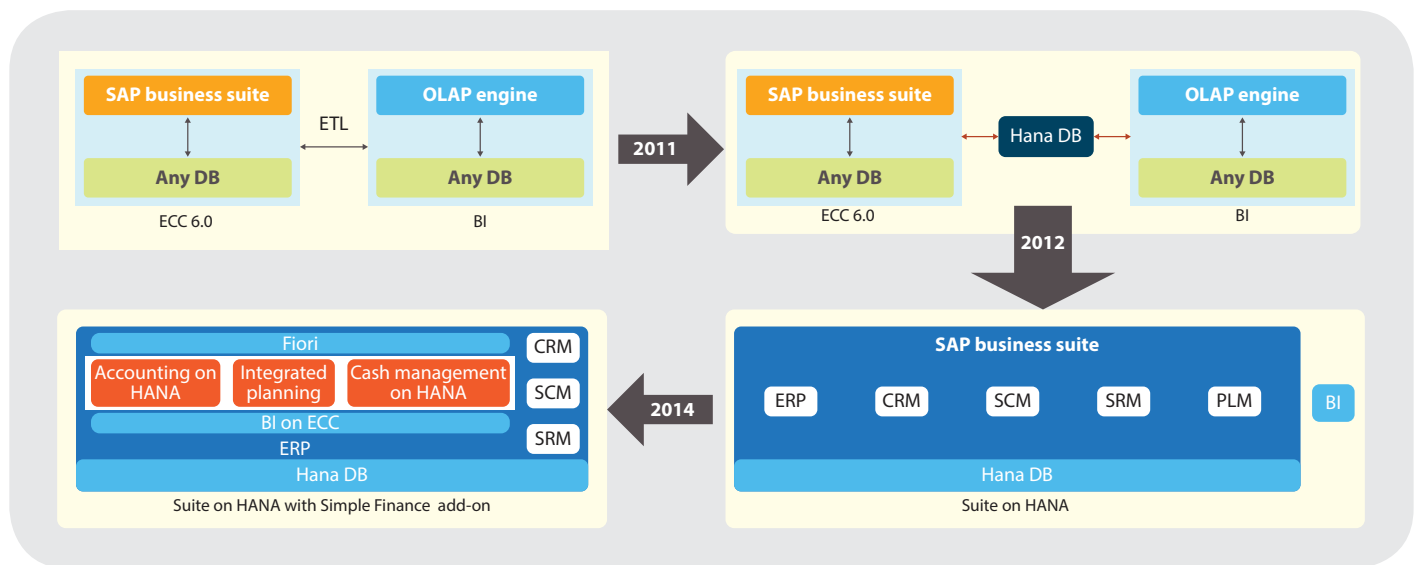
Infosys has gained early experience in cooperation with SAP over the last months and has built up our expertise for Simple Finance on HANA.

Problems businesses are facing today

 <p>CFO</p> <p>I have to wait for days to find out performance of the new product</p> <p>I need reliable and real-time data anywhere to take decisions</p>	 <p>Controller</p> <p>I want to slice and dice data in Excel with real-time updates</p> <p>Entering my planning in ERP is a nightmare</p>	 <p>CIO / IT</p> <p>I cannot touch the core ERP systems, but I need HANA functionality</p> <p>It takes months to develop new finance applications</p>	 <p>Finance Manager</p> <p>Why do I have differences in revenues between two reports?</p> <p>I cannot drill down to document level</p>	 <p>Accountant</p> <p>I have to click too many buttons</p> <p>It takes too much time to process a journal</p>
--	--	---	--	---



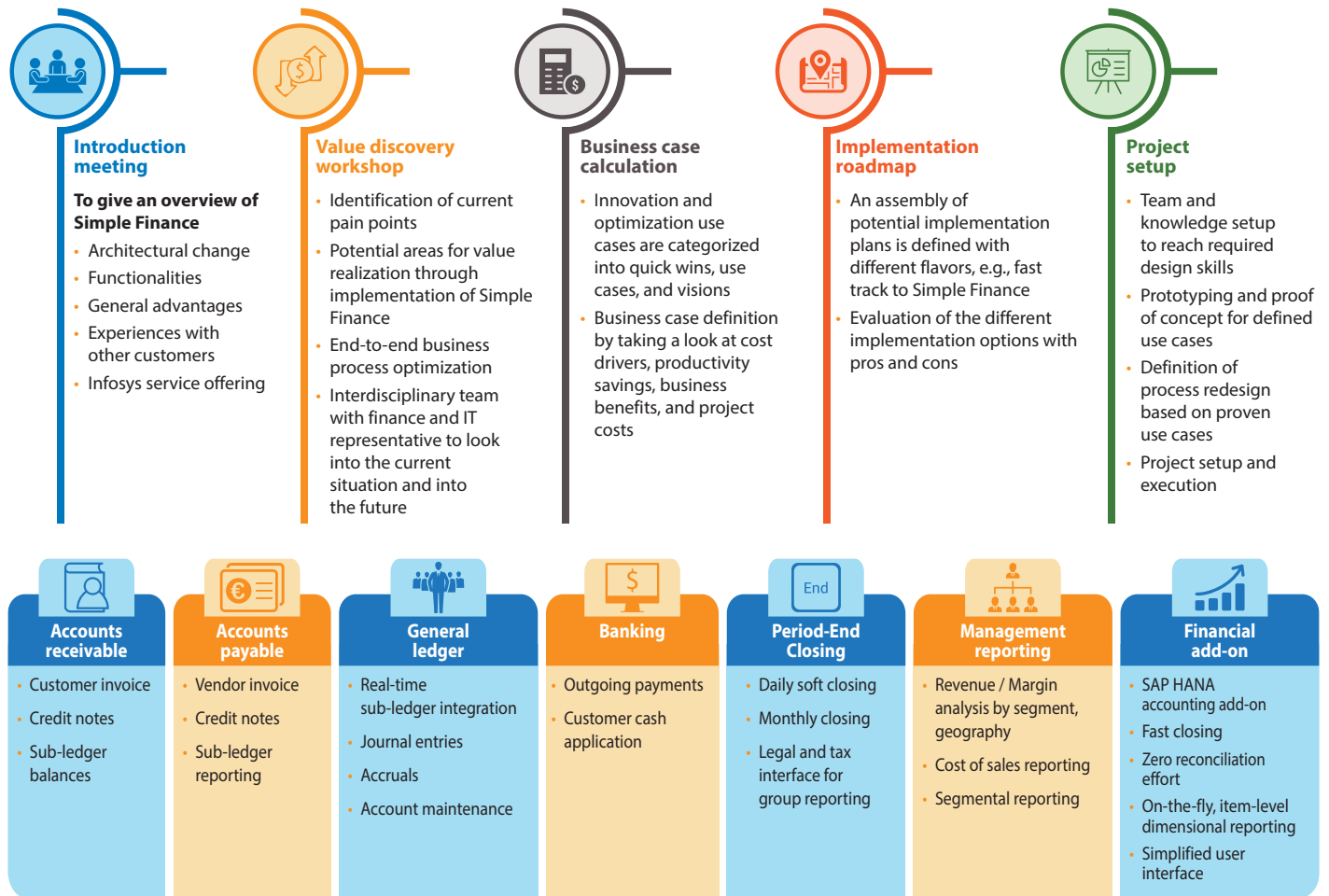
Solution



What Infosys has in store for you

- 30% reduction in overall implementation timelines with our preconfigured solution
- Personalized analytics, with granular drill-down capabilities from financial KPIs, improves decision-making to CXO level executives and other finance users
- Full suite of Simple Finance that unlocks full potential of SAP HANA
- Flexible deployment model with our fully managed private cloud-hosted landscape on HANA
- Simple, role-based, coherent, and delightful apps make it easier to analyze and evaluate strategic or operational KPIs in real time
- Account-based COPA designer tool for rapid migration to account-based COPA removing bottlenecks from closing processes resulting in accelerated close

Infosys provides a five-step approach to assess your finance landscape and provide recommendations on how you can iron out complexities to ease up your functional landscape



Functional solution for you

This can create a foundation for a fully integrated ERP backbone with logistics and accounting for export parts and also simplify screens, reporting, and executive dashboards based on the latest HANA SAP solution.

For more information, contact askus@infosys.com

Infosys
be more

© 2017 Infosys Limited, Bengaluru, India. All Rights Reserved. Infosys believes the information in this document is accurate as of its publication date; such information is subject to change without notice. Infosys acknowledges the proprietary rights of other companies to the trademarks, product names and such other intellectual property rights mentioned in this document. Except as expressly permitted, neither this documentation nor any part of it may be reproduced, stored in a retrieval system, or transmitted in any form or by any means, electronic, mechanical, printing, photocopying, recording or otherwise, without the prior permission of Infosys Limited and/ or any named intellectual property rights holders under this document.