

# Analyst Meet 2006

## Software Engineering and Technology Labs (SETLabs)

Subu Goparaju

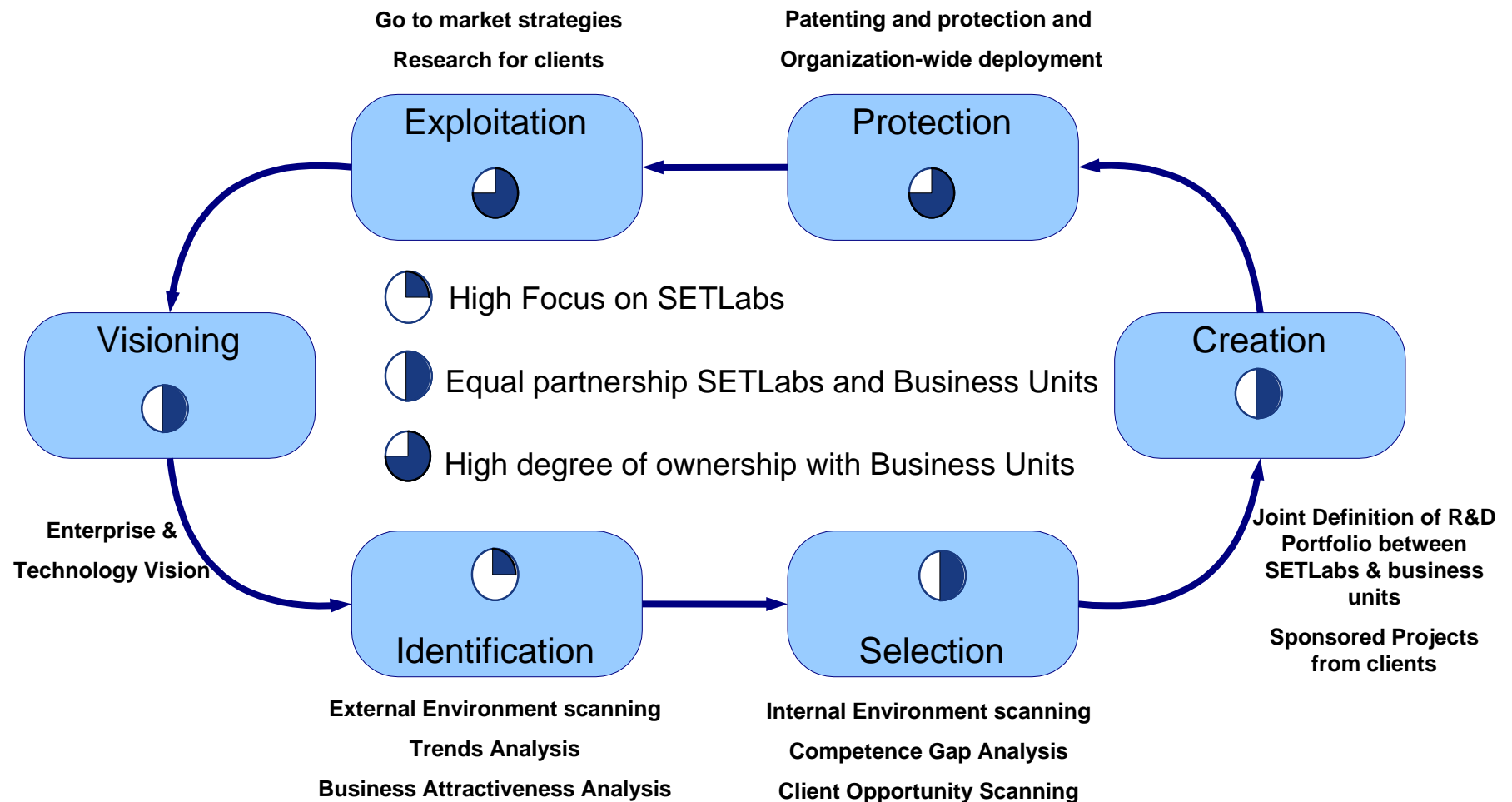
*Vice President & Head - SETLabs*

Certain statements in this Analyst meet concerning Infosys' future growth prospects are forward-looking statements which involve a number of risks and uncertainties that could cause actual results to differ materially from those in such forward-looking statements. The risks and uncertainties relating to these statements include, but are not limited to, risks and uncertainties regarding fluctuations in earnings, our ability to manage growth, intense competition in IT services including those factors which may affect our cost advantage, wage increases in India, our ability to attract and retain highly skilled professionals, time and cost overruns on fixed-price, fixed-time frame contracts, client concentration, restrictions on immigration, our ability to manage our international operations, reduced demand for technology in our key focus areas, disruptions in telecommunication networks, our ability to successfully complete and integrate potential acquisitions, liability for damages on our service contracts, the success of the companies in which Infosys has made strategic investments, withdrawal of governmental fiscal incentives, political instability, legal restrictions on raising capital or acquiring companies outside India, and unauthorized use of our intellectual property and general economic conditions affecting our industry. Additional risks that could affect our future operating results are more fully described in our United States Securities and Exchange Commission filings including our Annual Report on Form 20- F for the fiscal year ended March 31, 2006. These filings are available at [www.sec.gov](http://www.sec.gov). Infosys may, from time to time, make additional written and oral forward looking statements, including statements contained in the company's filings with the Securities and Exchange Commission and our reports to shareholders. The company does not undertake to update any forward-looking statement that may be made from time to time by or on behalf of the company.

# Why Innovation is Important at Infosys

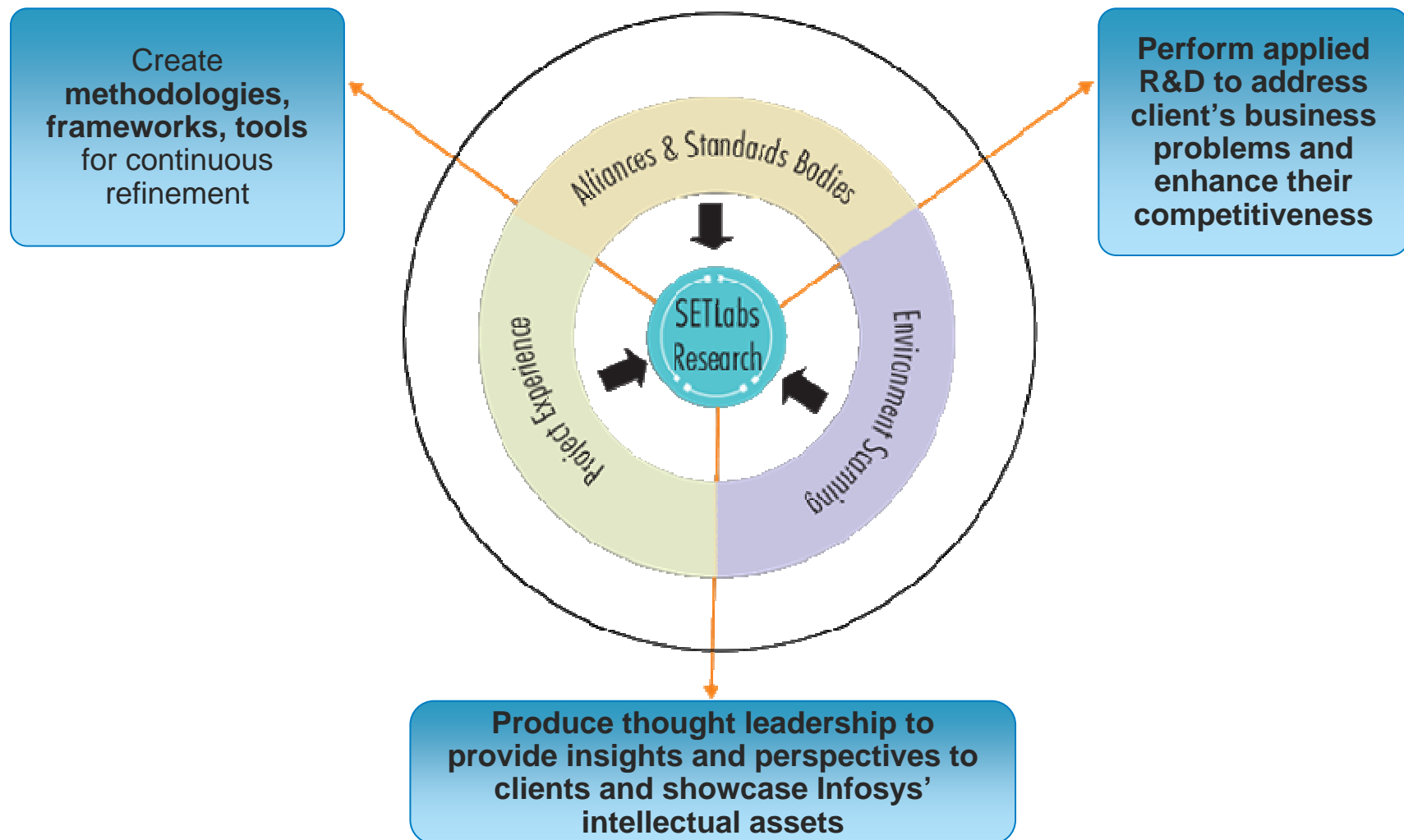
- » Innovation in a company like Infosys is driven through applied research, with the purpose of finding application of technology for business purposes
- » AIM: To reduce the time lag between a technology innovation by core technology developers and technology users
  - » Being a trusted partner of clients by providing the best solutions on state-of-the-art technologies as they mature in the markets
  - » Using state-of-the-art technologies for improving our internal productivity in order to deliver better and faster on client deliverables

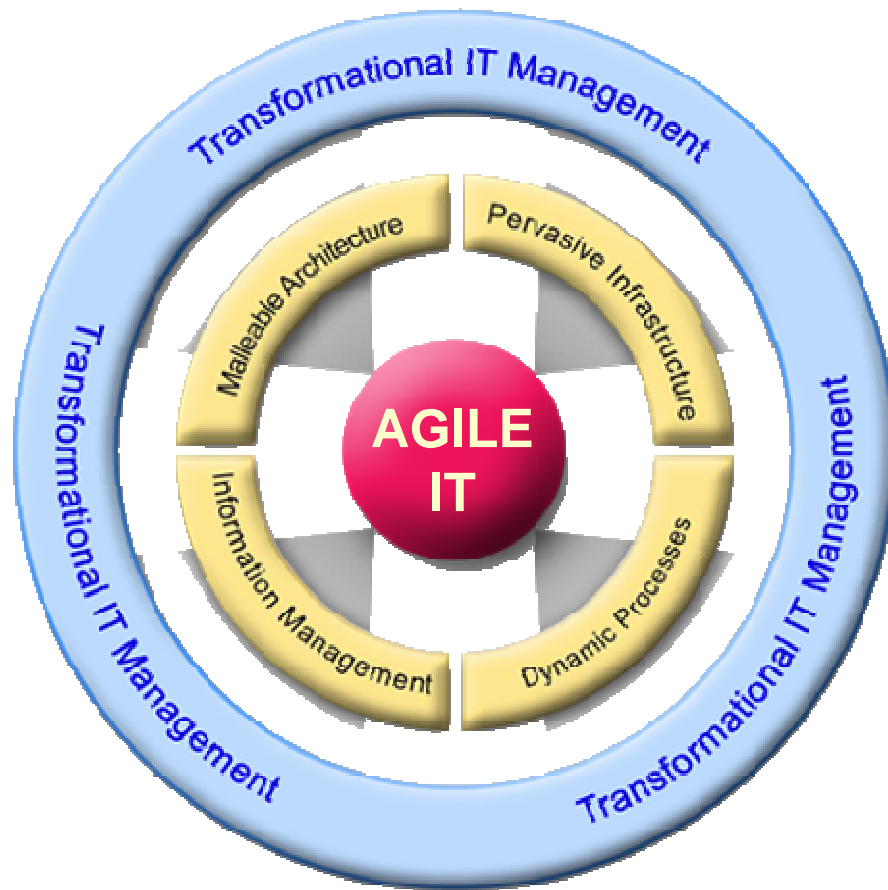
# Internal model of Innovation Management



**This process is driven through the Technology Council of the Company**

# SETLabs Charter: Fueling Innovation





Source: Infosys Research

- » **Dynamic processes**  
Flexibility in analysis and re-design of business processes
- » **Malleable Architecture**  
Building interoperability in a changing technology and business landscape
- » **Personalized Information Management**  
Providing unified corporate wide information personalized to individual stakeholders
- » **Pervasive Infrastructure**  
Services characterized by mobility, wireless connectivity, context awareness, implicit inputs, smart spaces, and natural interfaces for human-device interaction.
- » **Transformational IT Management**  
Cost-effective adaptability to change focused on ecosystem value maximization

Research projects employ a variety of technologies to realize this vision

# Research Areas

Dynamic Processes	Malleable Architecture	Personalized Information	Pervasive Infrastructure	Transformational IT Management	Technology Platforms
Business Process Management	Web Services	Enterprise Content Management	Mobile Computing	Outsourcing	Linux
Intelligent Systems	SOA	Business Intelligence	Convergent Technologies	IT Strategy	J2EE
Enterprise Collaboration	Software Architecture	Data warehousing	Sensor Networks	IT Management	.Net
Knowledge Engineering/ Ontology	Open Source	Knowledge Management	RFID	Solution Methodologies	RTOS, Embedded Systems
High availability systems	Grid Computing	Security, Infrastructure	Peer to Peer Networks	Regulatory compliance	Maintenance COE
	Multi-processor architectures	Legacy Systems	Low cost Devices	IT organization Research	
<b>Software Engineering</b> ( Engineering Methodologies, Performance Engineering , QoS, Platform Engineering )					





- » Over 55 IP assets  
(methodologies, tools, solutions)
- » 38 patents filed with 20 more intentions to file
- » Publications
  - » Over 200 Technical Research Papers,
  - » 82 Research Notes,
  - » 36 White Papers,
  - » 34 Case Studies and other documents



# SETLabs Offerings – An Illustrative list

## **Influx**

- » Aligns IT solutions to business processes by providing a holistic and unambiguous understanding of process automation and its impact

## **IPSP (Intelligent Production Support Platform)**

- » Reduces turn around times through automation expanding individual capability thereby leading to a faster ramp-up of new engineers

## **Winnow (Expert Vendor Selection Platform)**

- » Aids vendor/product selection through a set of scenario-specific tools resulting in a typical cost saving of 50% or more

## **Radein – J2EE Application Framework**

- » Increases productivity through reuse and effort reduction

## **InFin-IT (Financial Model for IT Business Value Measurement)**

- » Decision making tool for IT budget allocation

## **IT Effectiveness Tool**

- » Squeezes inefficiency and reduces IT spending
- » Integrated Performance Management Tool
- » Eliminates architecture performance problems thereby reducing TCO

## **Gridworm**

- » Grid Work Flow Manager used to submit jobs in a Grid Computing environment

## **MAGI – Management of Adaptive Grid Infrastructure**

- » MAGI supports an integrated approach towards resource management through virtualization, policy management and autonomic capabilities

## **Gradient**

- » Gradient is a solution for enterprise information integration using data grids technology

## **mConnect**

- » A real time mobile transactions platform to roll out of mobile transactions services by extending existing internet transaction systems

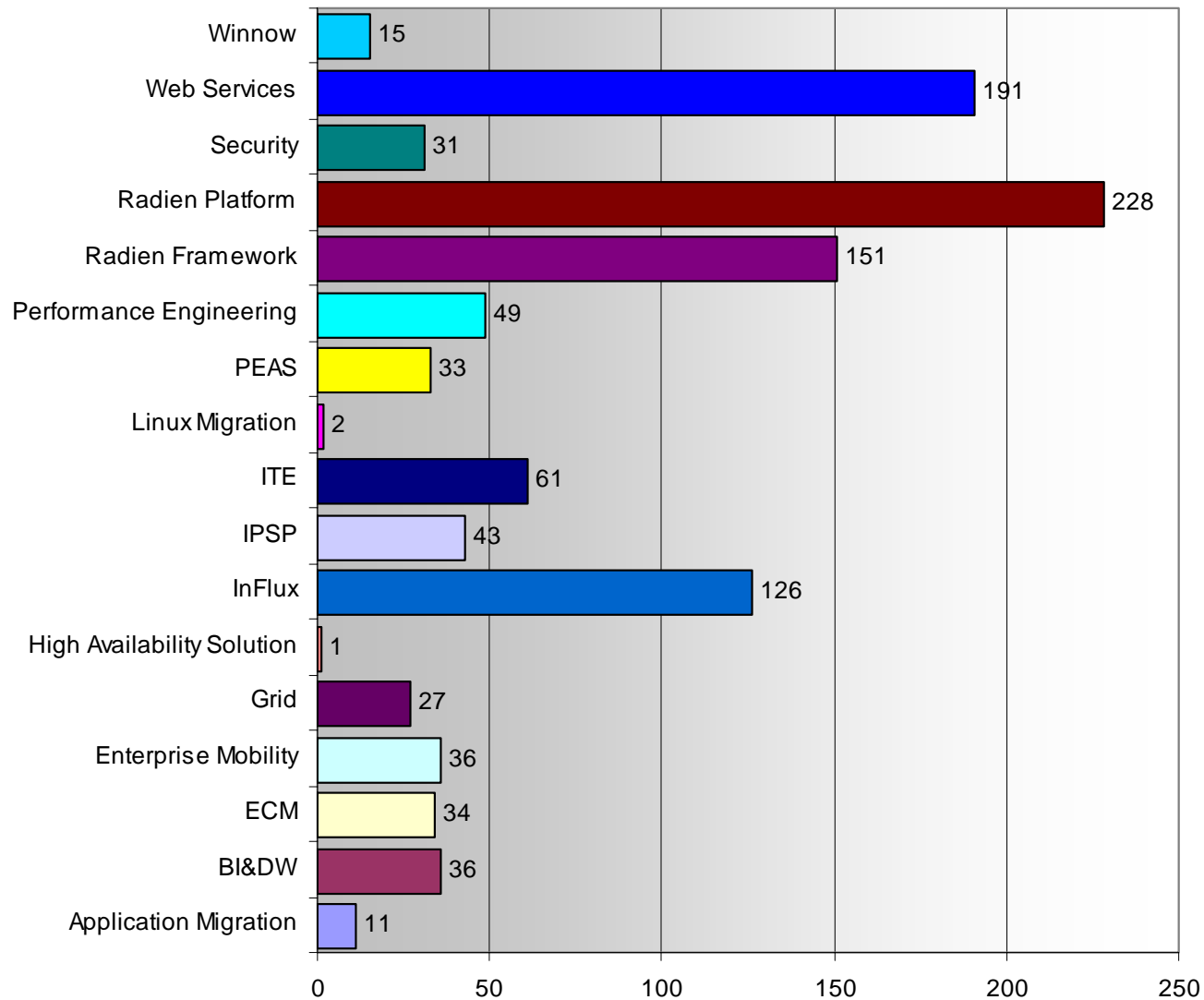
## **Syndeo**

- » An non-intrusive framework for Web Services management, security and governance

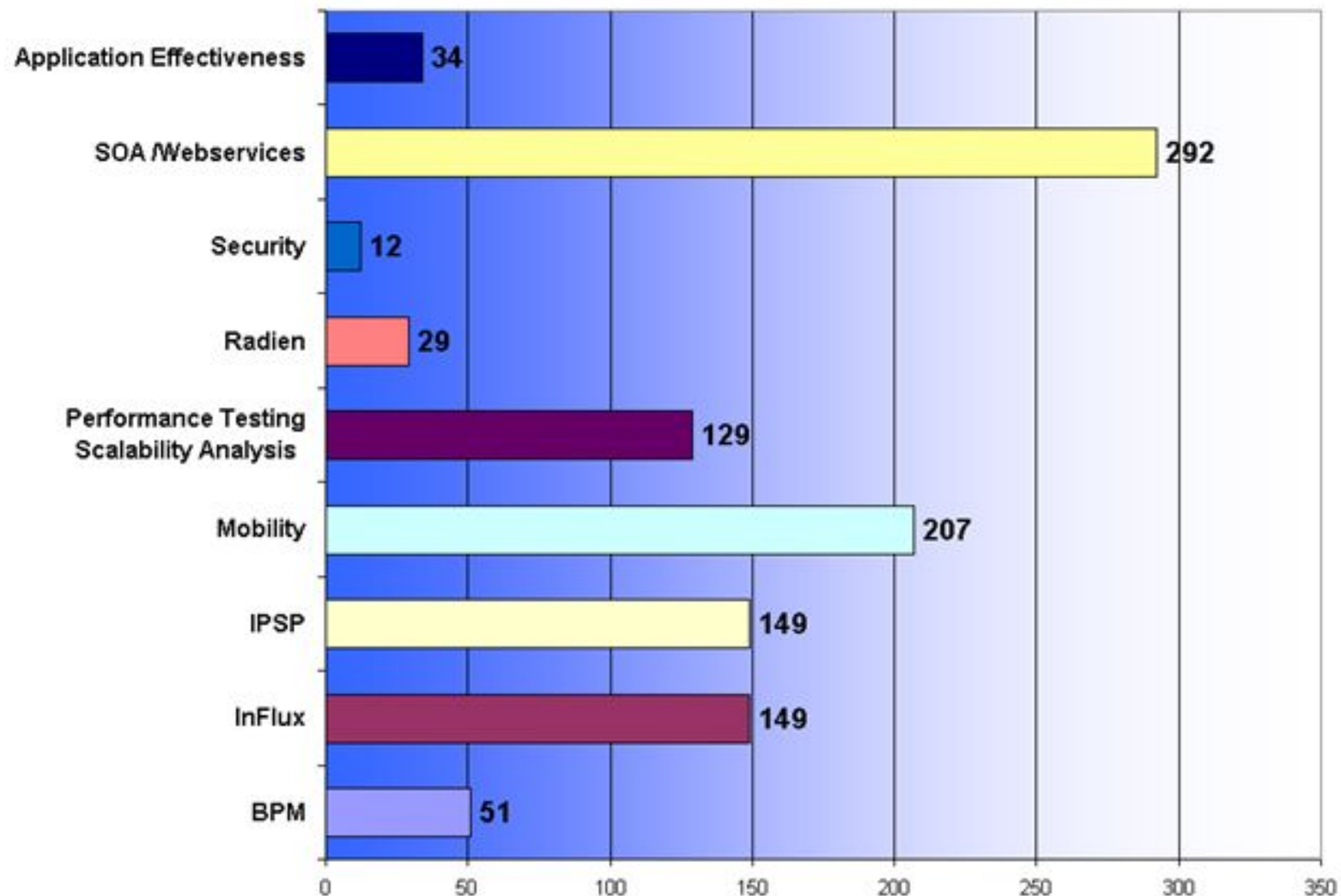
## **PEAS - Process Execution and Analysis Platform**

- » A platform used to develop BPM infrastructure components to model and execute Enterprise Business Processes

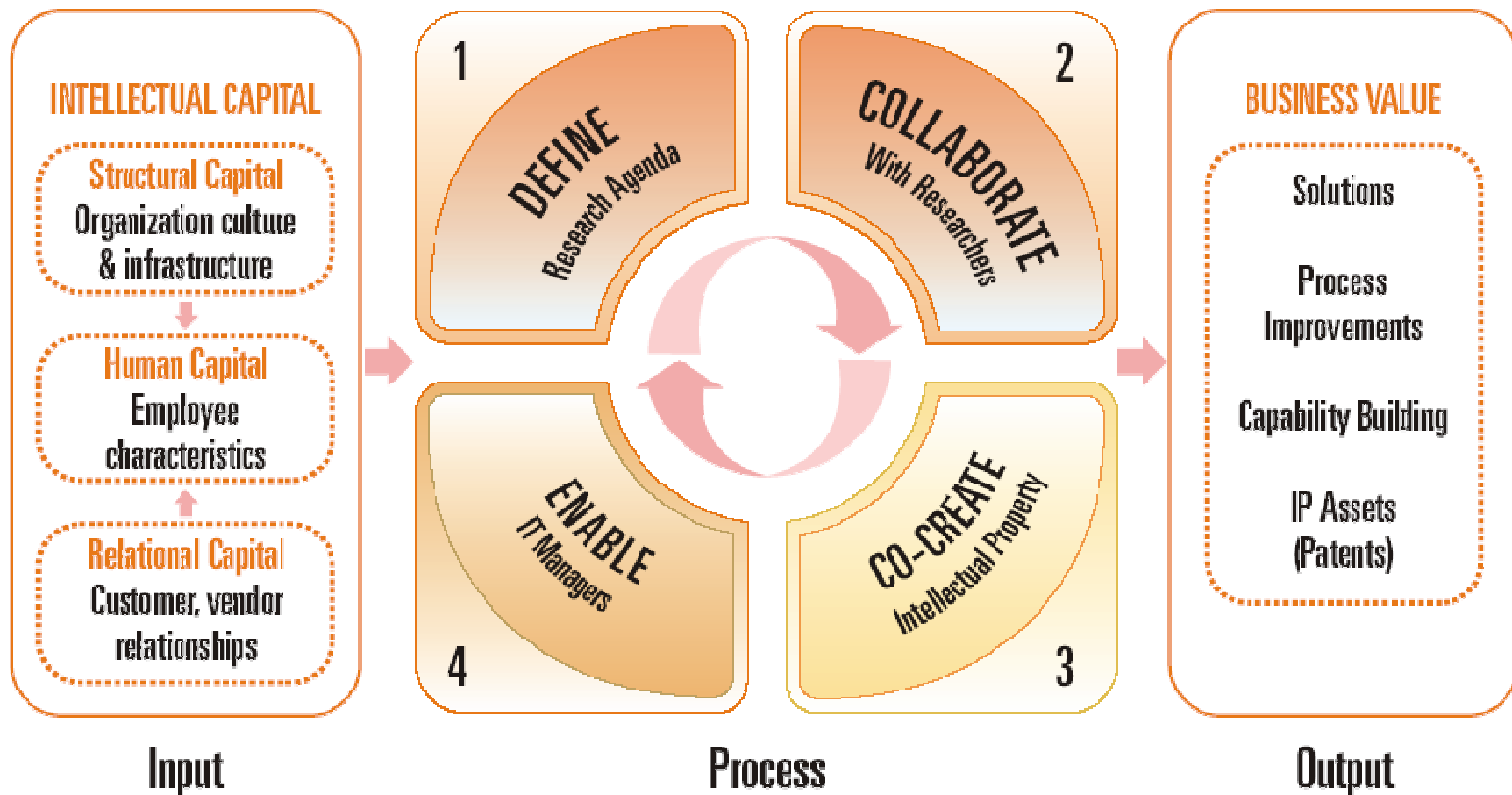
# SETLabs IP usage across research areas (Jul 05 -Jun 06)



# Enabling Infosys delivery on IP Assets (Apr-Jun 06)



# The Co-creation Process with Infosys Clients



14 innovation workshops with CXOs in US; Global roll out in FY 2006-07

# Analyst Meet 2006

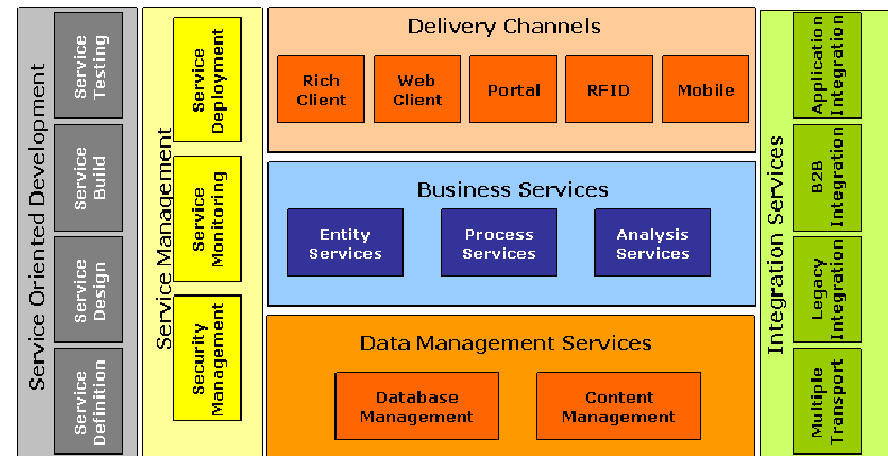
Sample Solutions/Offerings  
from SETLabs and Impact

## What is Catalytic IT

Catalytic IT is Infosys approach to the creation of Flexible IT environment based on Microsoft (and related) technologies

## Impact to Infosys Clients

- Microsoft adoption is increasing in the enterprise...
- .NET Platform is also rapidly evolving across enterprise IT
  - Development Environment
  - Communication Technologies
  - Integration
  - Content / Data
- Infosys has created over 30 offerings & IP assets.



Infosys' SPEED Framework

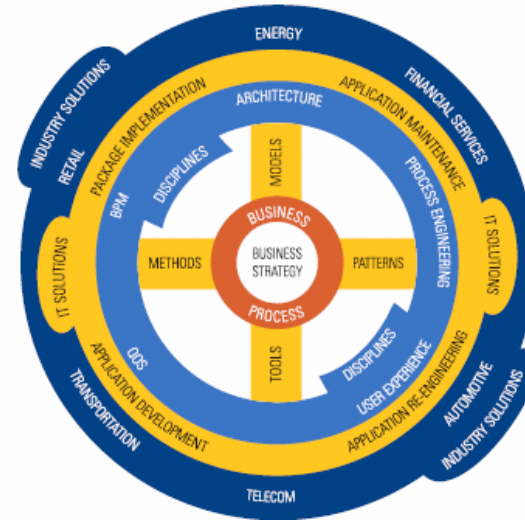
## Benefits to Infosys

- 9 engagements over 12 M USD
- Strong pipeline
- 4 broad areas of engagement – Legacy Modernization, Infrastructure Optimization, Connected Business, Package consolidation

Figures for Q1 - 2006

InFlux represents a collection of methodologies supported by toolsets for IT solution blueprinting

- Aligns IT with business by seamlessly deriving IT requirements from new business requirements
- Address requirements through frameworks for process engineering, quality of service and user experience design
- Reduces time-to-value for IT projects by the reducing errors and rework



- InFlux has been deployed in over 120 projects, across industry sectors, for process modeling and multi channel integration.
- 16 end user license agreements signed, 10 in pipeline for enterprise level adoption

Figures for FY 06

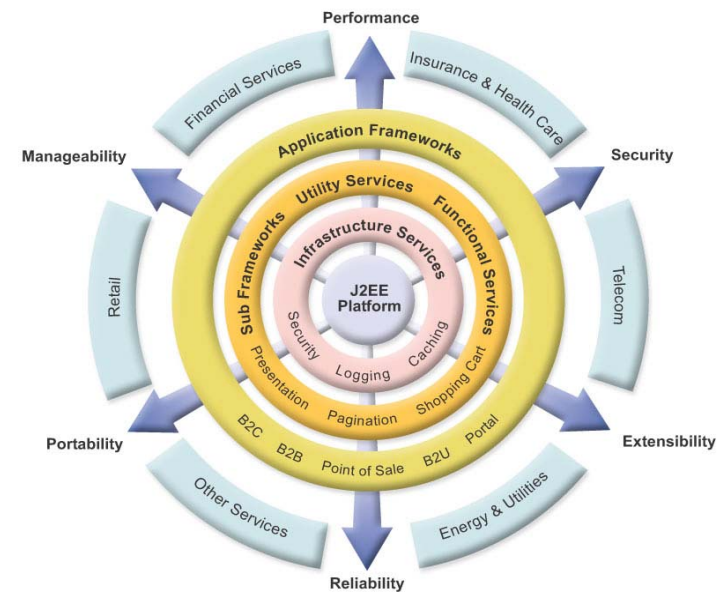


## What is Radien

Radien is the Infosys J2EE Application Framework that facilitates implementing agile multi tier distributed systems

## Impact to Infosys Clients

- Typically, in architecture phase
  - Effort reduction - 75 %
  - Defect Reduction - 70 %
- Typically, in production phase
  - Effort reduction - 70 %
- Solutions can handle 2 million transactions in 8 hour time period
- Better utilization of expert resources
- Remote monitoring possible



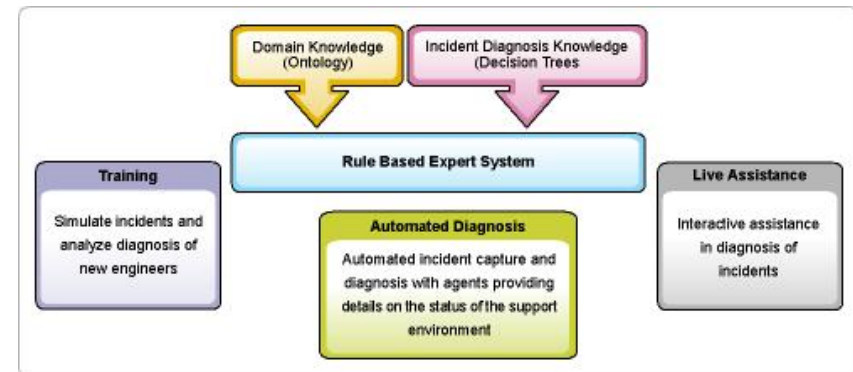
## Benefits to Infosys

- Radien has helped implementing agile multi-tier distributed systems across 345 projects
- 16 license agreements signed, 4 in pipeline for enterprise level adoption

Figures for FY 06

## What is IPSP

IPSP is a knowledge based platform that improves knowledge acquisition and incident diagnosis in the software production process



## Impact to Infosys Clients

- Comprehensive acquisition of production support knowledge
- Reduction in transition cost & effort
- Higher % of incident resolution can be done by first level support
- Induction of new engineers has lower impact
- Reduction in overall number of support engineers

## Benefits to Infosys

- Over 42 projects across Infosys use IPSP. Typical benefits are:
- Productivity improvement through 7% total reduction in effort
- Productivity improvement through reduction in expert involvement by 62%
- Productivity improvement through training effort reduction by 26%

Figures for FY 06

## What is mConnect

mConnect is a real time mobile transactions platform to roll out mobility transaction services by extending existing internet transaction infrastructure



## Impact to Infosys Clients

- Abstracts the complexities of the mobile world by
  - Recognizing the mobile device being used to access the service
  - Transcodes the UI in real time to optimize its characteristics
- Clients can leverage existing internet infrastructure and quickly extend it to the mobile world

## Benefits to Infosys

- Quick deployment platform for mobility adoption
- Next generation mobility solution
- 12 proof-of-concepts for enterprise level adoption across retail and banking industry vertical

Figures for Q1 - 2006

# Analyst Meet 2006

Thank You

[www.infosys.com](http://www.infosys.com)